

11 A.M. 2 P.M.



NEXT LEVEL
APPAREL™

2020 CATALOG



MEN'S • WOMEN'S • UNISEX • YOUTH



THE NEXT LEVEL APPAREL PROMISE

Style Shown: 6210

PASSIONATE ABOUT CUSTOMERS

We're motivated by making our customers' lives better and easier. We're genuinely interested in hearing about our customers' needs and improving our products and processes accordingly. Because when our customers win, we win.

COMMITTED TO OUR COMMUNITIES

It's our priority to ensure that all of our workers around the world are treated fairly. We strive to make a positive impact on their lives and in the communities in which they live and work.

OBSESSED WITH QUALITY

We're on a quest to make the best t-shirts we possibly can. That's why we're committed to ensuring quality in every fabric we use, every cut we design, and all the details, so you never even have to think about them.

PURPOSEFUL ABOUT INNOVATION

We love finding new ways to do things, but we know new isn't always better. That's why we are all about balancing creativity and

TABLE OF CONTENTS

Introduction	2	6410: Unisex Sueded Crew	44	7401: Unisex Inspired Dye L/S Crew	82
Table of Contents	3-4	6407: Unisex Sueded Snow Crew NEW	45	7451: Unisex Inspired Dye L/S Pocket Crew	82
New Styles	5	6440: Unisex Sueded V	46	7410S: Unisex Power Crew	83
Style Index	6-7	6480: Women's Sueded V	46	7415S: Unisex Power Pocket Crew	84
Brand Overview	8	6491: Unisex Sueded Zip Hoody	47	7433S: Unisex Power Tank	84
Social Responsibility	9	6411: Unisex Sueded L/S Crew	47	7401S: Unisex Power L/s Crew	85
3600: Unisex Cotton Crew	11	3600A: Unisex USA Cotton Crew	49	7451S: Unisex Power L/S Pocket Crew	85
3900: Women's Boyfriend Tee	12	3900A: USA Women's Boyfriend Tee	49	8221: Unisex Thermal Hoody	86
3601: Men's Cotton L/S Crew	13	6010A: Unisex USA Tri-Blend Crew	49	8201: Unisex Thermal L/S Crew	87
3605: Unisex Cotton Pocket Crew	14	4600: Unisex Eco Heavyweight Tee	50	9303: Unisex 80/20 Fleece Pullover Hoody	90
3602: Unisex Cotton Long Body Crew	15	4210: Unisex Eco Performance Tee	51	9001: Unisex 80/20 Fleece Crew with Pocket	91
3633: Unisex Cotton Tank	15	4212: Youth Eco Performance Crew NEW	52	9602: Unisex 80/20 Fleece Zip Hoody	92
3200: Unisex Cotton V	16	4240: Women's Eco Performance V NEW	53	9103: 80/20 Fleece Youth Zip Hoody	93
3940: Women's Relaxed V	17	6200: Unisex Poly/Cotton Crew	56	9300: Unisex PCH Pullover Hoody	94
3650: Unisex Cotton Raglan Tee	18-19	5080: Women's Festival Cali Crop	56	9603: Women's PCH Raglan Zip Hoody	95
3604: Unisex Cotton Ringer Tee	20-21	5030: Women's Festival Scoop	56	9700: Unisex PCH Bomber Jacket	96
3904: Women's Cotton Ringer Tee	20-21	5033: Women's Festival Tank	57	9301: Unisex French Terry Pullover Hoody	99
3710: Girl's Princess Tee	22	5013: Women's Festival Muscle Tank	57	9601: Unisex French Terry Zip Hoody	98
3310: Youth Cotton Crew	23	5040: Women's Festival Sleeveless V	57	9000: Unisex French Terry L/S Crew	97
3110: Toddler Cotton Tee	23	1800: Unisex Ideal Heavyweight Crew NEW	60-61	9600: Unisex Denim Fleece Zip Hoody	100
6251: Unisex CVC 3/4 Sleeve Raglan NEW	24-25	1533: Women's Ideal Racerback Tank	62	9801: Women's Denim Fleece Jogger	101
6210: Unisex CVC Crew	26	1540: Women's Ideal V	63	9800: Men's Denim Jogger	101
6610: Women's CVC Tee	27	1510: Women's Ideal Tee	64	Fabrics	102-103
6240: Men's CVC V	28	1560: Women's Ideal Dolman	65	Extended Sizes	104
6640: Women's CVC Deep V	29	1530: Women's Ideal Flow Tee	66	Size Guide	105
6233: Unisex CVC Tank	30	6360: Women's Roll Sleeve Dolman	67	Specs	106-111
3352: Youth CVC 3/4 Raglan	30	1534: Ideal Colorblock Racerback Tank	68	Print Guide	112-113
3312: Youth CVC Crew	31	6333: Ideal Muscle Tank	69	Index	114
3712: Girl's Princess CVC Tee	31	6338: Gathered Racerback Tank	69	Color Card	115-118
6010: Unisex Tri-Blend Crew	32	7481S: Women's Cropped L/S Tee NEW	70		
6710: Women's Tri-Blend Tee	33	6951: Women's French Terry 3/4 Raglan	71		
6310: Youth Tri-Blend Crew	33	6931: Women's French Terry L/S Scoop	72		
6040: Men's Tri-Blend V	34	6933: French Terry Racerback Tank	73		
6740: Women's Tri-Blend Deep V	35	3533: Women's Spandex Jersey Tank	74		
6733: Women's Tri-Blend Racerback Tank	36	6633: Spandex Jersey Racerback Tank	75		
6734: Tri-Blend Racerback Tank Dress	37	6533: Burnout Racerback Tank	76		
6730: Women's Tri-Blend L/S Scoop	38	6521: Women's Burnout L/S Hoody	77		
6071: Unisex Tri-Blend L/S Crew	39	2022: Unisex Mock Twist S/S Hoody	79		
6760: Women's Tri-Blend Dolman	40	2050: Men's Mock Twist Raglan Crew	79		
6731: Women's Tri-Blend Scoop	41	2021: Unisex Mock Twist Raglan Hoody	79		
6021: Unisex Tri-Blend L/S Hoody	42	7433: Unisex Inspired Dye Tank	81		
6072: Men's Tri-Blend L/S Henley	42	7415: Unisex Inspired Dye Pocket Crew	81		
6051: Unisex Tri-Blend 3/4 Raglan	43	7410: Unisex Inspired Dye Crew	82		

TABLE OF CONTENTS BY FABRIC

SUSTAINABLE 50-53		7401: Unisex Inspired Dye L/S Crew 82	1534: Ideal Color Block Racerback Tank 68		
4210: Unisex Eco Performance Tee 51		7433: Unisex Inspired Dye Tank 81	1530: Women's Ideal Flow Tee 66		
4600: Unisex Eco Heavyweight Tee 50		7415: Unisex Inspired Dye Pocket Crew 81	1560: Women's Ideal Dolman 65		
4212: Youth Eco Performance Crew NEW 52		7451: Unisex Inspired Dye L/S Pocket Crew 82	6360: Women's Roll Sleeve Dolman 67		
4240: Women's Eco Performance V NEW 53		7410S: Unisex Power Crew 83	6338: Women's Gathered Racerback Tank 69		
POLY/COTTON / FESTIVAL 56-57		7415S: Unisex Power Pocket Crew 84	6333: Unisex Muscle Tank 69		
5080: Women's Festival Cali Crop 56		7433S: Unisex Power Tank 84	BURNOUT JERSEY 76-77		
5033: Women's Festival Tank 57		7401S: Unisex Power L/S Crew 85	6521: Women's Burnout Hoody 77		
5013: Women's Festival Muscle Tank 57		7451S: Unisex Power L/S Pocket Crew 85	6533: Women's Burnout Racerback Tank 76		
5040: Women's Festival Sleeveless V 57		100% COTTON (FINE JERSEY) 10-23		SPANDEX JERSEY 74-75	
5030: Women's Festival Scoop 56		3904: Women's Cotton Ringer Tee 20-21	3533: Women's Spandex Jersey Tank 74		
6200: Unisex Poly/Cotton Crew 56		3604: Unisex Cotton Ringer Tee 20-21	6633: Women's Spandex Racerback Tank 75		
MOCK TWIST 79		3650: Unisex Cotton Raglan Tee 18-19	LIGHTWEIGHT FRENCH TERRY 71-73		
2021: Unisex Mock Twist Raglan Hoody 79		3600: Unisex Cotton Crew 11	6951: Women's French Terry 3/4 Raglan 71		
2050: Men's Mock Twist Raglan Crew 79		3900: Women's Boyfriend Tee 12	6931: Women's French Terry L/S Scoop 72		
2022: Unisex Mock Twist S/S Hoody 79		3310: Youth Cotton Crew 23	6933: Women's French Terry Racerback Tank 73		
SUEDED JERSEY 44-47		3710: Girl's Princess Tee 22	WAFFLE THERMAL 86-87		
6407: Unisex Sueded Snow Crew NEW 45		3110: Toddler Cotton Tee 23	8201: Unisex Thermal L/S Crew 86		
6410: Unisex Sueded Crew 44		3200: Unisex Cotton V 16	8221: Unisex Thermal Hoody 87		
6440: Unisex Sueded V 46		3633: Unisex Cotton Tank 15	MIDWEIGHT FRENCH TERRY 97-99		
6480: Women's Sueded V 46		3940: Women's Relaxed V 17	9301: Unisex French Terry Pullover Hoody 99		
6411: Unisex Sueded L/S Crew 47		3601: Unisex Cotton L/S Crew 13	9601: Unisex French Terry Zip Hoody 98		
6491: Unisex Sueded Zip Hoody 47		3602: Unisex Cotton Long Body Crew 15	9000: Unisex French Terry Raglan Crew 97		
TRI-BLEND JERSEY 32-43		3605: Unisex Cotton Pocket Crew 14	80/20 FLEECE 90-93		
6010: Unisex Tri-Blend Crew 32		3600A: Unisex USA Cotton Crew 49	9001: Unisex 80/20 Fleece Crew with Pocket 91		
6310: Youth Tri-Blend Crew 33		3900A: USA Women's Boyfriend Tee 49	9303: Unisex 80/20 Fleece Pullover Hoody 90		
6710: Women's Tri-Blend Tee 33		7481S: Women's Cropped L/S Tee NEW 70	9602: Unisex 80/20 Fleece Zip Hoody 92		
6740: Women's Tri-Blend Deep V 35		CVC JERSEY 24-31		9103: 80/20 Fleece Youth Zip Hoody 93	
6040: Men's Tri-Blend V 34		6210: Unisex CVC Crew 26	DENIM FLEECE 100-101		
6760: Women's Tri-Blend Dolman 40		6610: Women's CVC Tee 27	9600: Unisex Denim Fleece Zip Hoody 100		
6730: Women's Tri-Blend Scoop 41		3312: Youth CVC Crew 31	9800: Men's Denim Fleece Jogger 101		
6733: Women's Tri-Blend Racerback Tank 36		3712: Girl's Princess CVC Tee 31	9801: Women's Denim Fleece Jogger 101		
6734: Tri-Blend Racerback Tank Dress 37		3352: Youth CVC 3/4 Raglan 30	PCH FLEECE 94-96		
6731: Women's Tri-Blend L/S Scoop 38		6240: Men's CVC V 28	9603: Women's PCH Raglan Zip Hoody 95		
6071: Unisex Tri-Blend L/S Crew 39		6233: Unisex CVC Tank 30	9300: Unisex PCH Pullover Hoody 94		
6072: Men's Tri-Blend Raglan Henley 42		6640: Women's CVC Deep V 27	9700: Unisex PCH Bomber Jacket 96		
6021: Unisex Tri-Blend L/S Hoody 42		6251: Unisex CVC 3/4 Sleeve Raglan NEW 24-25			
6051: Unisex Tri-Blend 3/4 Raglan 43		IDEAL COLLECTION/ COTTON POLY 60-69			
6010A: Unisex USA Tri-Blend Crew 49		1510: Women's Ideal Tee 64			
INSPIRED DYE / MIDWEIGHT JERSEY 81-85		1540: Women's Ideal V 63			
7410: Unisex Inspired Dye Crew 82		1800: Unisex Ideal Heavyweight Crew NEW 60-61			
		1533: Women's Ideal Racerback Tank 62			

NEW 2020 STYLES



STYLE INDEX

WOMEN



3900
Women's Boyfriend Tee
pg.12



3900A
USA Women's Boyfriend Tee
pg.49



3904
Women's Cotton Ringer Tee
pg.20-21



3940
Women's Relaxed V
pg.17



6610
Women's CVC Tee
pg.27



6640
Women's CVC Deep V
pg.29



6480
Women's Sueded V
pg.46



NEW 7481S
Women's Cropped L/S Tee
pg.70



6710
Women's Tri-Blend Tee
pg.33



6740
Women's Tri-Blend Deep V
pg.35



6730
Women's Tri-Blend Scoop
pg.38



6760
Women's Tri-Blend Dolman
pg.40



6731
Women's Tri-Blend L/S Scoop
pg.38



6733
Women's Tri-Blend Racerback Tank
pg.36



6734
Tri-Blend Racerback Tank Dress
pg.37



5033
Women's Festival Tank
pg.57



5013
Women's Festival Muscle Tank
pg.57



5040
Women's Festival Sleeveless V
pg.57



5030
Women's Festival Scoop
pg.56



5080
Women's Festival Cali Crop
pg.56



3533
Women's Spandex Jersey Tank
pg.30



6633
Women's Spandex Jersey Racerback Tank -
pg.75



6533
Women's Burnout Racerback Tank
pg.76



6521
Women's Burnout L/S Hoody
pg.77



1510
Women's Ideal Tee
pg.64



1540
Women's Ideal V
pg.63



1533
Women's Ideal Racerback Tank
pg.62



1534
Women's Ideal Colorblock Racerback Tank
pg.68



1530
Women's Ideal Flow Tee
pg.66



1560
Women's Ideal Dolman
pg.65



6338
Women's Gathered Racerback Tank
pg.69



6360
Women's Roll Sleeve Dolman
pg.67



NEW 4240
Women's Eco Performance V
pg.53



6951
Women's French Terry 3/4 Raglan
pg.71



6931
Women's French Terry L/S Scoop
pg.72



6933
Women's French Terry Racerback Tank
pg.73



9603
Women's PCH Raglan Zip Hoody
pg.95



9801
Women's Denim Fleece Jogger
pg.101

YOUTH



3110
Toddler Cotton Tee
pg.23



3710
Girl's Princess Tee
pg.22



3712
Girl's Princess CVC Tee
pg.31



3310
Youth Cotton Crew
pg.23



3312
Youth CVC Crew
pg.31



6310
Youth Tri-Blend Crew
pg.33



3352
Youth CVC 3/4 Raglan
pg.30



9103
80/20 Fleece Youth Zip Hoody
pg.93



NEW 4212
Youth Eco Performance Crew
pg.52

MEN



3601
Men's Cotton L/S Crew
pg.13



6240
Men's CVC V
pg.28



6040
Men's Tri-Blend V
pg.34



6072
Men's Tri-Blend L/S Henley
pg.42



2050
Men's Mock Twist Raglan Crew
pg.79



9800
Men's Denim Fleece Jogger
pg.101

STYLE INDEX

UNISEX



3600
Unisex Cotton Crew
pg.11



3600A
Unisex USA Cotton Crew
pg.49



3605
Unisex Cotton Pocket Crew
pg.14



3604
Unisex Cotton Ringer Tee
pg.20-21



3650
Unisex Cotton Raglan Tee
pg.18-19



3200
Unisex Cotton V
pg.16



3633
Unisex Cotton Tank
pg.15



3602
Unisex Cotton Long Body Crew
pg.15



NEW 6407
Unisex Sueded Snow S/S Crew
pg.45



NEW 6251
Unisex CVC 3/4 Sleeve Raglan
pg.24-25



6210
Unisex CVC Crew
pg.26



6233
Unisex CVC Tank
pg.30



6410
Unisex Sueded Crew
pg.44



6440
Unisex Sueded V
pg.46



6411
Unisex Sueded L/S Crew
pg.47



6010
Unisex Tri-Blend Crew
pg.32



6010A
Unisex USA Tri-Blend Crew
pg.49



6071
Unisex Tri-Blend L/S Crew
pg.39



6051
Unisex Tri-Blend 3/4 Raglan
pg.43



6021
Unisex Tri-Blend L/S Hoody
pg.42



6200
Unisex Poly/Cotton Crew
pg.56



4600
Unisex Eco Heavyweight Tee
pg.50



4210
Unisex Eco Performance Tee
pg.51



6333
Unisex Muscle Tank
pg.69



2022
Unisex Mock Twist Short Sleeve Hoody
pg.79



2021
Unisex Mock Twist Raglan Hoody
pg.79



8221
Unisex Thermal Hoody
pg.86



8201
Unisex Thermal L/S Crew
pg.87



7410S
Unisex Power Crew
pg.83



7415S
Unisex Power Pocket Crew
pg.84



7401S
Unisex Power L/S Crew
pg.85



7451S
Unisex Power L/S Pocket Crew
pg.85



7433S
Unisex Power Tank
pg.84



NEW 1800
Unisex Ideal Heavyweight Crew
pg.60-61



7410
Unisex Inspired Dye Crew
pg.82



7415
Unisex Inspired Dye Pocket Crew
pg.81



7401
Unisex Inspired Dye L/S Crew
pg.82



7451
Unisex Inspired Dye L/S Pocket Crew
pg.82



7433
Unisex Inspired Dye Tank
pg.81



6491
Unisex Sueded Zip Hoody
pg.47



9000
Unisex French Terry L/S Crew
pg.97



9301
Unisex French Terry Pullover Hoody
pg.99



9601
Unisex French Terry Zip Hoody
pg.98



9001
Unisex 80/20 Fleece Crew with Pocket
pg.91



9303
Unisex 80/20 Fleece Pullover Hoody
pg.90



9602
Unisex 80/20 Fleece Zip Hoody
pg.92



9300
Unisex PCH Pullover Hoody
pg.94



9700
Unisex PCH Bomber Jacket
pg.96



9600
Denim Unisex Fleece Zip Hoody
pg.100



Since our genesis in 2003, **Next Level Apparel** continues to lead the industry with innovative fabric blends, fashion forward styles, a full spectrum of fits, a diverse color palette, and a passion for what we do and the customers we serve. This continues to define Next Level Apparel as one of the top suppliers of fashion blanks in the world market. Our global distribution network, now including over 28 locations, brings one of the most in demand fashion tees to your doorstep.

Styles Shown: (Tops) 3600, 3200,
(Bottoms) 9801, 9800

Commitment to our Sustainability

Our mission is to create a garment that destroys the notion of a disposable tee. In a generation fueled by a purpose-driven and mindful lifestyle, we have made it our mission to become more conscious of the vulnerability of the planet. It goes beyond the demand from customers. Next Level is committed to prioritizing this in all of our operations. All garments are supplied to distributors without the use of additional plastic bags and wrapping. Our manufacturers are required to comply with all applicable environmental laws and regulations. Each member of our dynamic team is dedicated to following the CPSIA (Consumer Product Safety Improvement Act) testing standards.

The Next Level Apparel Sustainability line is made of top quality, ultra-soft, recycled cotton, organic cotton and made of approximately 3-4 recycled RPET bottles per shirt. The comfort and versatility of the styles are true to our motto, create a t-shirt you can live in.

Don't just live in our t-shirts, make a difference.



NEXT LEVEL
SUSTAINABLE™



Commitment to our Workers

Our commitment to our workers is to implement the highest ethical standards of conduct and best quality practices in the USA and internationally.

In October of 2019, Next Level Apparel was officially voted in by the Fair Labor Association (FLA) in Washington D.C. as an approved Participating Company, an achievement Next Level has had its sights set on since 2015. It's a badge that sets us apart and recognizes the commitment and diligence that has been put into our social responsibility and social compliance program since the company was founded in 2003.

This is a first step for Next Level Apparel to become an FLA accredited Participating Company. We are committed to upholding the FLA Workplace Code of Conduct and Principles of Fair Labor and Responsible Sourcing throughout our entire global supply chain.

We have made it our mission at Next Level Apparel to collaborate with the FLA and fellow affiliates to improve workers lives worldwide.

OUR PROMISE

Partner with suppliers who uphold the same high ethical standard. Prioritize worker's rights by ensuring working conditions in factories worldwide. Administer and implement our updated Workplace Code of Conduct throughout our entire global supply chain.

100% COMBED RING-SPUN COTTON



Style Shown: 3605

OUR BEST-SELLING RING-SPUN TEE

THE PERFECT PRINTING STAPLE.

THIS FABRIC IS COMFORTABLE AND LIGHTWEIGHT.

PRINTER'S PREFERRED FABRIC FOR DISCHARGE AND DTG PRINTING.



2020 NEW COLORS

3600 | UNISEX COTTON CREW

Fine Jersey. 32 single 145g/4.3oz 100% Combed Ring-Spun Cotton (Heather Gray 90% Cotton/10% Poly). Our best-selling ring-spun tee. The perfect printing staple. Set-in Collar 1x1 Baby Rib. Side Seamed. Tear Away Label.

XS-3XL; Select colors 4XL

			
natural	cream	banana cream	gold
			
light pink	desert pink	red	cardinal
			
light blue	tahiti blue	kelly green	turquoise
			
maroon	military green	light olive	forest green
			
cool blue	purple rush	royal	indigo
			
classic orange	antique gold	warm gray	dark chocolate
			
sand	light gray	heather gray	heavy metal
			
midnight navy	black	white	oatmeal
			
graphite black			



3900 | WOMEN'S BOYFRIEND TEE

Fine Jersey. 32 single 145g/4.3oz 100% Combed Ring-Spun Cotton (Heather Gray 90% Cotton/10% Poly.) Her version of his shirt. Top selling ring-spun tee in a wide variety of colors. Side seamed. Set-in Collar 1x1 Baby Rib. Tear Away Label.

XS-3XL

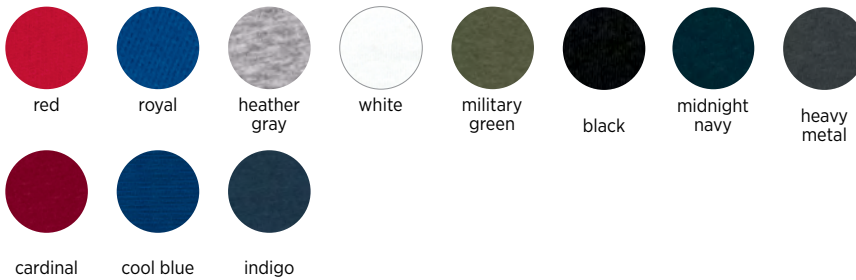




3601 | MEN'S COTTON L/S CREW

Fine Jersey. 32 single 145g/4.3oz 100% Combed Ring-Spun Cotton (Heather Gray 90% Cotton/10% Poly). Top selling ring-spun fabric, a perfect printing staple. Hemmed sleeves. 1x1 baby-rib set-in collar. Side seamed. Tear away label.

S-2XL

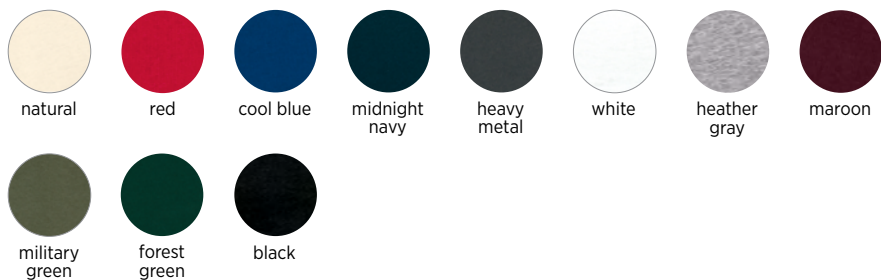




3605 | UNISEX COTTON POCKET CREW

Fine Jersey. 32 single 145g/4.3oz 100% Combed Ring-Spun Cotton (Heather Gray 90% Cotton/10% Poly). Top selling ring-spun fabric, a perfect printing staple. Hemmed sleeves. 1x1 baby-rib set-in collar. Side seamed. Tear away label.

S-2XL





3602 | UNISEX COTTON LONG BODY CREW

Fine Jersey. 32 single 145g/4.3oz 100% Combed Ring-Spun Cotton (Heather Gray 90% Cotton/10% Poly). Top selling ring-spun fabric. 1x1 baby-rib set-in collar. Curved bottom hem. Side seamed. Tear away label.

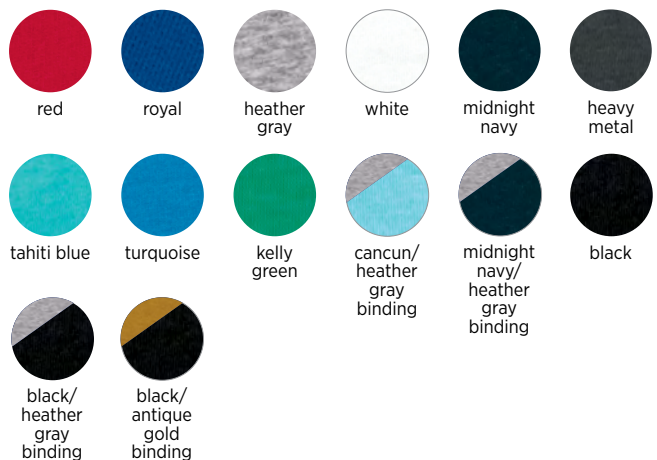
XS-3XL



3633 | UNISEX COTTON TANK

Fine Jersey. 32 single 145g/4.3oz 100% Combed Ring-Spun Cotton (Heather Gray 90% Cotton/10% Poly). Top selling ring-spun fabric. Self-fabric binding, contrasting where noted. Side seamed. Tear Away Label.

XS-2XL

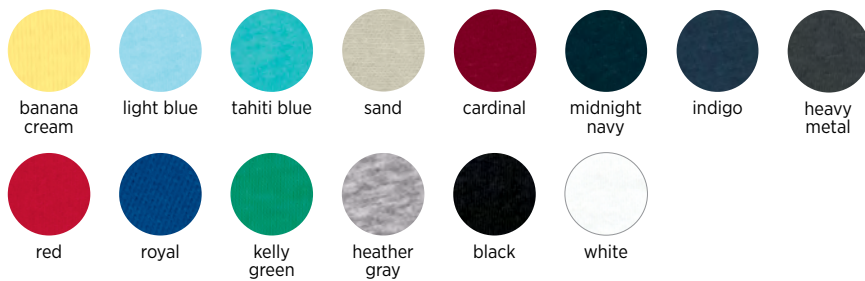




3200 | UNISEX COTTON V

Fine Jersey. 32 single 145g/4.3oz 100% Combed Ring-Spun Cotton (Heather Gray 90% Cotton/10% Poly). Top selling ring-spun fabric, a perfect printing staple. Side seamed. Set-in collar 1x1 baby rib. Tear away label.

XS-2XL

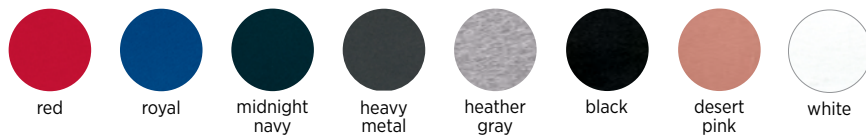




3940 | WOMEN'S RELAXED V

Fine Jersey. 100% Combed Ring-Spun Cotton. 32 single, 145g/4.3oz. (Heather Gray 90% Cotton/10% Poly) Top selling ring-spun fabric, a perfect printing staple. Set-in collar 1x1 baby rib. Relaxed fit. Side seamed. Tear away label.

XS-3XL





3650 | UNISEX COTTON RAGLAN TEE

Fine Jersey, 32 single 145g/4.3oz 100% Combed Ring-Spun Cotton (Heather Gray 90% Cotton/10% Poly). Contrast raglan sleeves and bound neck. Side seamed. Tear Away Label.

XS-3XL

colors listed: sleeve/body



maroon/natural



forest green/natural



midnight navy/
natural



black/natural



black/white



black/black



natural/black



warm gray/black



antique gold/black



black/heather gray



royal/heather gray



natural/red



3604 | UNISEX COTTON RINGER TEE

Fine Jersey. 32 single 145g/4.3oz 100% Combed Ring-Spun Cotton (Heather Gray 90% Cotton/10% Poly). Contrast 1x1 baby rib, bound collar and sleeves. Side seamed. Tear away label.

XS-3XL



natural/black



natural/maroon



natural/forest green



natural/midnight navy



white/black



heather gray/black



black/natural

3904 | WOMEN'S COTTON RINGER TEE

Fine Jersey. 32 single 145g/4.3oz 100% Combed Ring-Spun Cotton. Contrast 1x1 baby rib, bound collar and sleeves. Side seamed. Tear away label.

S-2XL



natural/
midnight navy

white/
black

natural/maroon



3710 | GIRL'S PRINCESS TEE

Fine Jersey. 32 single 145g/4.3oz 100% Combed Ring-Spun Cotton (Heather Gray 90% Cotton/10% Poly). Top selling ring-spun fabric in a variety of colors. Side seamed and tailored for girls sized 3/4 through 14/16. Set-in collar with front cover stitch 1x1 baby rib. Tear away label.

XS(3/4)-XL(14/16)



3310 | YOUTH COTTON CREW

Fine Jersey. 32 single 145g/4.3 oz 100% Combed Ring-Spun Cotton (Heather Gray 90% Cotton/10% Poly). Top selling ring-spun fabric in a variety of colors. Side seamed. Set-in collar 1x1 baby rib. Tear away label.

XS(4/5)-XL(14/16)



3110 | TODDLER COTTON TEE

Fine Jersey. 32 single 145g/4.3oz 100% Combed Ring-Spun Cotton (Heather Gray 90% Cotton/10% Poly). Set in collar 1x1 baby rib. Hemmed sleeves. Side seamed. Tear Away Label.

2T, 3T, 4T



THE ORIGINAL CVC



AN INDUSTRY PRINTING STAPLE

TOP OF THE LINE FABRIC THAT STANDS UP TO CONSISTENT WEAR WITHOUT SACRIFICING FIT OR FEEL. THE PERFECT FABRIC FOR ALL YOUR FAVORITE HEATHERED COLORS.

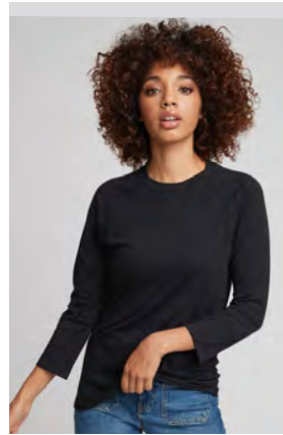
colors: (sleeve/body)



military green/
cream



black/
dark heather gray



black/
black



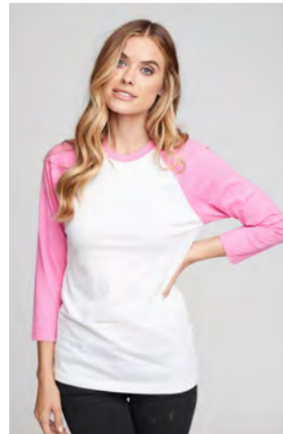
royal/
white



red/
white



kelly green/
white



hot pink/
white



indigo/
silk



black/
olive



midnight navy/
dark heather gray



black/
white

2020 NEW STYLE
6251 | UNISEX CVC 3/4 SLEEVE RAGLAN

CVC Jersey. 60% Combed Ring-Spun Cotton 40% Polyester 32 single, 145 grams/4.3oz. Top of the line fabric that stands up to consistent wear without sacrificing fit or feel. Collar and cover stitch are the color of the sleeves. Set in collar. Tear away label.

XS-3XL

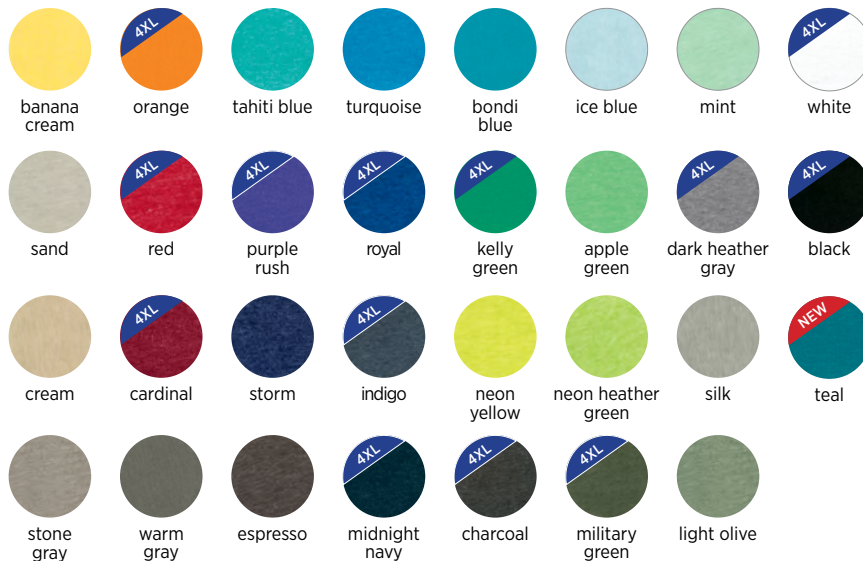
*Companion youth style 3352.



2020 NEW COLOR
6210 | UNISEX CVC CREW

CVC Jersey. 32 single 145g/4.3oz 60% Combed Ring-Spun Cotton 40% Poly. Top of the line fabric that stands up to consistent wear without sacrificing fit or feel. Perfect for all your favorite heathered colors plus solid white and black. Set-in Collar 1x1 CVC Baby Rib. Side seamed. Tear Away Label.

XS-3XL; Select colors 4XL





6610 | WOMEN'S CVC TEE

CVC Jersey. 32 single 145g/4.3oz 60% Combed Ring-Spun Cotton 40% Poly. Top of the line fabric that stands up to consistent wear without sacrificing fit or feel. Perfect for all your favorite heathered colors plus solid white and black. Side seamed with feminine curve. Set-in collar 1x1 CVC baby rib. Tear away label.

XS-2XL; Select colors 3XL





6240 | MEN'S CVC V

CVC Jersey. 32 single 145g/4.3oz 60% Combed Ring-Spun Cotton 40% Poly. Top of the line fabric that stands up to consistent wear without sacrificing fit or feel. Perfect for all your favorite heathered colors plus solid white and black. Set-in collar. Side seamed. Set-in collar 1x1 CVC baby rib. Tear away label.

S-2XL





6640 | WOMEN'S CVC DEEP V

CVC Jersey, 32 single 145g/4.3oz 60% Combed Ring-Spun Cotton 40% Poly. Top of the line fabric that stands up to consistent wear without sacrificing fit or feel. Perfect for all your favorite heathered colors plus solid white and black. Side seamed with feminine curve. Tear away label. Set-in collar 1x1 baby rib. Tear away label.

S-2XL





6233 | UNISEX CVC TANK

CVC Jersey. 32 single 145g/4.3oz 60% Combed Ring-Spun Cotton 40% Poly. Top of the line fabric that stands up to consistent wear without sacrificing fit or feel. Perfect in heathered colors. Self-fabric binding. Side seamed. Tear away label.

XS-2XL



ice blue



dark
heather
gray



military
green



charcoal

3352 | YOUTH CVC 3/4 RAGLAN

CVC Jersey. 32 single 145g/4.3oz 60% Combed Ring-Spun Cotton 40% Poly. Top of the line fabric that stands up to consistent wear without sacrificing fit or feel. Collar and cover stitch are the color of the sleeves. Set-in collar. Side seamed. Tear away label.

XS(4/5) - XL(14/16)

*Companion adult style 6251

Colors: Sleeve/Body



black/
dark heather gray



black/
white



hot pink/
white



ice blue/
dark heather gray



kellygreen/
white



red/
white



royal/
white



midnight navy/
dark heather gray



lilac/
dark heather gray





3712 | GIRL'S PRINCESS CVC TEE

CVC Jersey. 32 single 145g/4.3oz 60% Combed Ring-Spun Cotton 40% Poly. Top of the line fabric that stands up to consistent wear without sacrificing fit or feel. Side seamed and tailored for girls. Set-in collar with front cover stitch 1x1 CVC baby rib. Tear away label.

XS(3/4) - XL(14/16)



3312 | YOUTH CVC CREW

CVC Jersey. 32 single 145g/4.3oz 60% Combed Ring-Spun Cotton 40% Poly. Top of the line fabric that stands up to consistent wear without sacrificing fit or feel. Perfect for your favorite heathered colors plus solid white and black. Side seamed. Set-in collar 1x1 CVC baby rib. Tear away label.

XS(4/5) - XL(14/16)



TRI-BLEND

VERSATILE AND EFFORTLESS

THE PERFECT BLEND THAT IS INCREDIBLY SOFT WITH
GREAT DRAPE, STRETCH AND RECOVERY.
HEATHERED COLORS WITH A VINTAGE LOOK.



6010 | UNISEX TRI-BLEND CREW

Tri-Blend Jersey. 32 single 145g/4.3oz 50% Poly 25% Combed Ring-Spun Cotton 25% Rayon. A perfect blend that is incredibly soft with great drape, stretch and recovery. Heathered colors with a vintage look. Side seamed. 1x1 tri-blend baby rib set-in collar. Satin label.

XS-3XL





6710 | WOMEN'S TRI-BLEND TEE

Tri-Blend Jersey. 32 single 145g/4.3oz 50% Poly 25% Combed Ring-Spun Cotton 25% Rayon. A perfect blend that is incredibly soft with great drape, stretch and recovery. Heathered colors with a vintage look. Side seamed with feminine curve. 1x1 tri-blend baby rib set-in collar with front cover stitch. Satin label.

S-2XL



6310 | YOUTH TRI-BLEND CREW

Tri-Blend Jersey. 32 single 145g/4.3oz 50% Poly 25% Combed Ring-Spun Cotton 25% Rayon. Kids will appreciate this incredibly soft, lightweight fabric. Heathered colors with a great vintage look. Side seamed. 1x1 tri-blend baby rib set-in collar. Satin label.

XS(4/5)-XL(14/16)

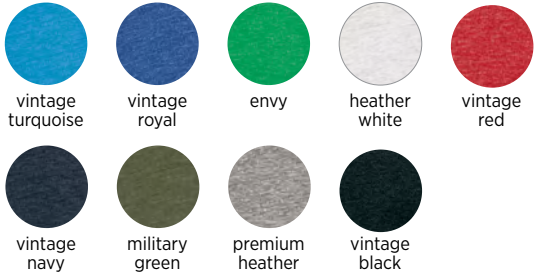




6040 | MEN'S TRI-BLEND V

Tri-Blend Jersey. 32 single 145g/4.3oz 50% Poly 25% Combed Ring-Spun Cotton 25% Rayon. A perfect blend that is incredibly soft with great drape, stretch and recovery. Heathered colors with a vintage look. Side seamed. 1x1 tri-blend baby rib set-in collar. Satin label.

S-2XL

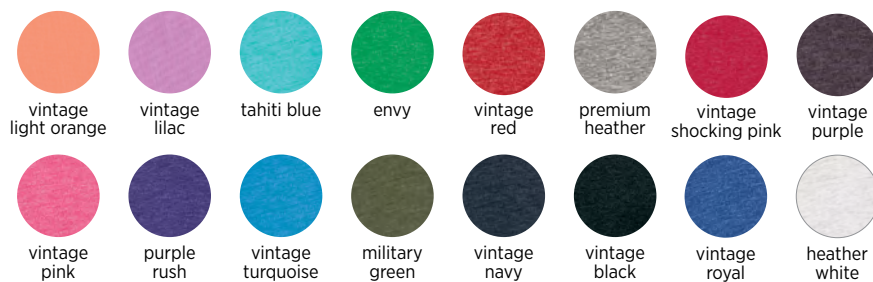




6740 | WOMEN'S TRI-BLEND DEEP V

Tri-Blend Jersey. 32 single 145g/4.3oz 50% Poly 25% Combed Ring-Spun Cotton 25% Rayon. A perfect blend that is incredibly soft with great drape, stretch and recovery. Heathered colors with a vintage look. Side seamed with feminine curve. 1x1 tri-blend baby rib set-in collar. Satin label.

S-2XL





6733 | WOMEN'S TRI-BLEND RACERBACK TANK

Tri-Blend Jersey. 32 single 145g/4.3oz 50% Poly 25% Combed Ring-Spun Cotton 25% Rayon. A perfect blend that is incredibly soft with great drape, stretch and recovery. Heathered colors with a vintage look. Flatlock finished hems for a raw edge look. Side seamed. Satin label.

XS-2XL





6734 | WOMEN'S TRI-BLEND RACERBACK TANK DRESS

Tri-Blend Jersey. 32 single 145g/4.3oz 50% Poly 25% Combed Ring-Spun Cotton 25% Rayon. A perfect blend that is incredibly soft with great drape, stretch and recovery. Versatile silhouette works as a dress or cover-up. Heathered colors with a vintage look. Self-fabric binding. Side seamed. Tear away label.

XS-2XL



premium heather



indigo



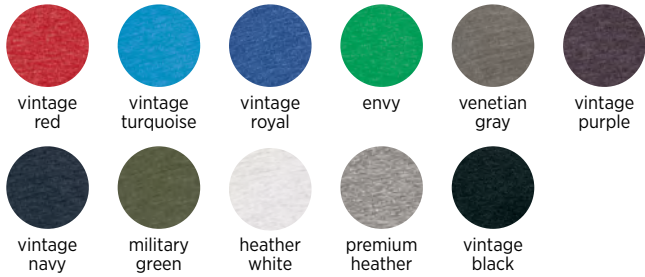
vintage black



6731 | WOMEN'S TRI-BLEND L/S SCOOP

Tri-Blend Jersey. 32 single 145g/4.3oz 50% Poly 25% Combed Ring-Spun Cotton 25% Rayon. A perfect blend that is incredibly soft with great drape, stretch and recovery. Heathered colors with a vintage look. Side seamed. Flattering scoop neckline. 1x1 tri-blend baby rib set-in collar with front cover stitch. Satin label.

S-2XL





6071 | UNISEX TRI-BLEND L/S CREW

Tri-Blend Jersey. 32 single 145g/4.3oz 50% Poly 25% Combed Ring-Spun Cotton 25% Rayon. A perfect blend that is incredibly soft with great drape, stretch and recovery. Heathered colors with a vintage look. Side seamed. 1x1 tri-blend baby rib set-in collar. Hemmed sleeves. Satin label.

XS-2XL



tahiti blue



vintage royal



vintage red



venetian gray



vintage navy



heather white



premium heather



indigo



vintage purple



military green



vintage black



6760 | WOMEN'S TRI-BLEND DOLMAN

Tri-Blend Jersey. 32 single 145g/4.3oz 50% Poly 25% Combed Ring-Spun Cotton 25% Rayon. Heathered colors with a vintage look. Dolman has a flowy fit that is flattering for all. Side seamed. 1x1 tri-blend baby rib set-in collar with front cover stitch. Satin label.

XS-3XL





6730 | WOMEN'S TRI-BLEND SCOOP

Tri-Blend Jersey. 32 single 145g/4.3oz 50% Poly 25% Combed Ring-Spun Cotton 25% Rayon. A perfect blend that is incredibly soft with great drape, stretch and recovery. Heathered colors with a vintage look. Side seamed with feminine curve. Very flattering scoop neckline. 1x1 tri-blend baby rib set-in collar with front cover stitch. Satin label.

S-2XL





6021 | UNISEX TRI-BLEND L/S HOODY

Tri-Blend Jersey. 32 single 145g/4.3oz 50% Poly 25% Combed Ring-Spun Cotton 25% Rayon. A perfect blend that is incredibly soft with great drape, stretch and recovery. Heathered colors with a vintage look. Side seamed. 1x1 tri-blend baby rib cuffs. Three piece, single layer hood. Satin label.

XS-2XL



6072 | MEN'S TRI-BLEND L/S HENLEY

Tri-Blend Jersey. 32 single 145g/4.3oz 50% Poly 25% Combed Ring-Spun Cotton 25% Rayon. A perfect blend that is incredibly soft with great drape, stretch and recovery. Heathered colors with a vintage look. Side seamed. Dyed to match buttons, 3 button placket. Raglan sleeves, hemmed. Satin label.

S-2XL





6051 | UNISEX TRI-BLEND 3/4 RAGLAN

Tri-Blend Jersey. 32 single 145g/4.3oz 50% Poly 25% Combed Ring-Spun Cotton 25% Rayon. A perfect blend that is incredibly soft with great drape, stretch and recovery. Heathered colors with a vintage look. Side seamed. 1x1 tri-blend baby rib set-in collar. Collar and cover stitch are the color of the sleeves. Curved bottom hem, flatlock finish. Satin label.

XS-3XL

Colors: listed Sleeve/Body



THE ORIGINAL SUEDED

IRRESISTIBLE SOFT FABRIC

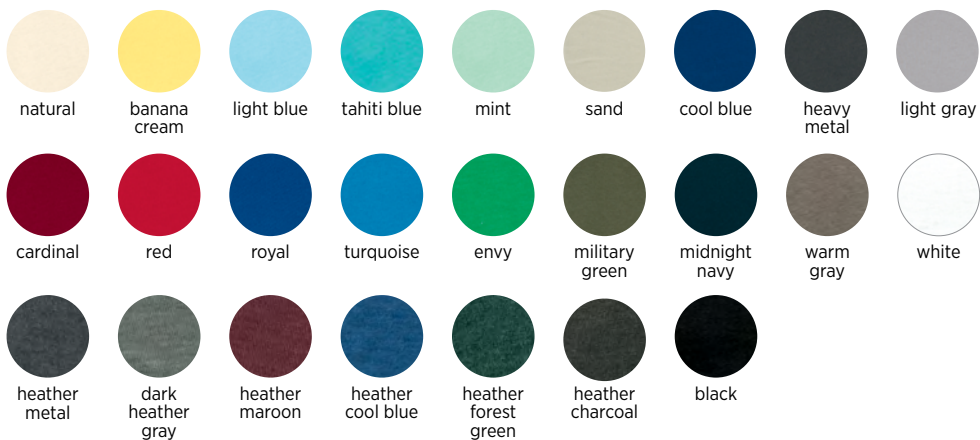
EXPERIENCE THE SOFT VELVET FEEL AND
THE UNIQUE BRUSHED FINISH OF THIS INNOVATIVE FABRIC.
PRINTS LIKE A DREAM. AVAILABLE IN SOLID AND HEATHERED COLORS.



6410 | UNISEX SUEDED CREW

Sueded Jersey. 32 single 145g/4.3oz 60% Combed Ring-Spun Cotton 40% Poly. Experience the soft velvet feel and the unique brushed finish of this incredible fabric. Prints like a dream. Available in solid and heathered colors. 1x1 sueded baby-rib set-in collar. Side seamed. Satin label.

XS-3XL





2020 NEW STYLE

6407 | UNISEX SUEDED SNOW CREW

Sueded Jersey. 32 single 145g/4.3oz 60% Combed Ring-Spun Cotton 40% Poly. Experience the soft velvet feel and the unique brushed finish of this incredible fabric. New look, same incredible velvet soft feel of the original sueded crew. 1x1 sueded baby rib set-in collar. Side seamed. Tear away label.

XS-3XL



snow
heather
red



snow
heather
green



snow
heather
blue



snow
heather
indigo



snow
heather
gray



6440 | UNISEX SUEDED V

Sueded Jersey. 32 single 145g/4.3oz 60% Combed Ring-Spun Cotton 40% Poly. Velvet soft feel and unique brushed finish. Prints like a dream. 1x1 sueded baby rib set-in collar. Side seamed. Satin label.

XS-2XL



6480 | WOMEN'S SUEDED V

Sueded Jersey. 32 single 145g/4.3oz 60% Combed Ring-Spun Cotton 40% Poly. Velvet soft feel and unique brushed finish. Prints like a dream. 1x1 sueded baby-rib set-in collar with front cover stitch. Side seamed. Satin label.

XS-2XL

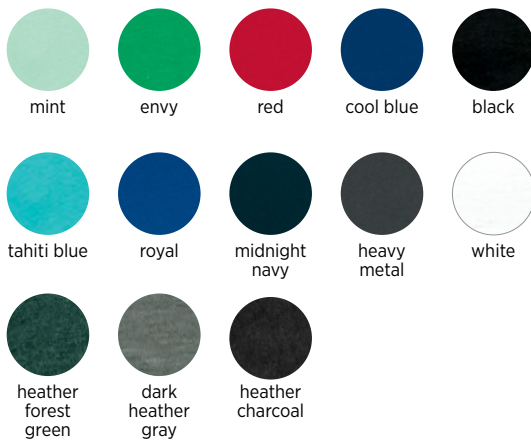




6491 | UNISEX SUEDED ZIP HOODY

Sueded Jersey. 32 single 145g/4.3oz 60% Combed Ring-Spun Cotton 40% Poly. Velvet soft feel and unique brushed finish. Prints like a dream. Premium dyed matching #5 YKK kissing zipper, unlined hood, 1x1 ribbing at cuffs and waistband, unisex fit. Tear away label.

XS-3XL



6411 | UNISEX SUEDED L/S CREW

Sueded Jersey. 32 single 145g/4.3oz 60% Combed Ring-Spun Cotton 40% Poly. Set-in Collar 1x1 Sueded Baby Rib. Velvet soft feel and unique brushed finish. Prints like a dream. Side seamed. Set in collar 1x1 sueded baby rib. 2" rib cuffs. Tear away label.

XS-3XL



MADE IN THE U.S.A.



FREEDOM TO CHOOSE

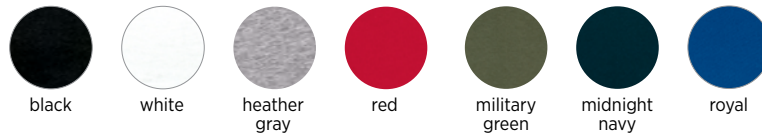
YOUR NLA FAVORITES IN A USA VERSION.
KNIT, DYED, CUT, AND SEWN IN THE USA.



3600A | UNISEX USA COTTON CREW

Fine Jersey. 100% Combed Ring-Spun Cotton (Heather Gray 90% Cotton/10% Poly.) 32 single 145g/4.3oz. Set-in Collar 1x1 baby rib. Knit, dyed, cut and sewn in the USA. Tear away label.

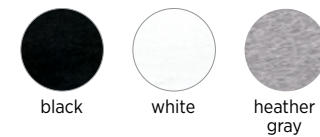
XS-3XL



3900A | USA WOMEN'S BOYFRIEND TEE

Fine Jersey. 100% Combed Ring-Spun Cotton (Heather Gray 90% Cotton/10% Poly.) 32 single 145g/4.3oz. Set-in Collar 1x1 baby rib. Knit, dyed, cut and sewn in the USA. Tear away label.

XS-3XL



6010A | UNISEX USA TRI-BLEND CREW

Tri-Blend Jersey. 25% Combed Ring-Spun Cotton/50% Poly/25% Rayon. 32 single 145g/4.3oz. Set-in Collar 1x1 Tri-Blend baby rib. Knit, dyed, cut and sewn in the USA. Tear away label.

XS-3XL



SUSTAINABLE

ECO CONSCIOUS TEE

NEW SUSTAINABLE HEAVIER WEIGHT FABRIC WITH A PREMIUM SOFT HAND.
MADE OF APPROXIMATELY 4 RECYCLED RPET BOTTLES PER SHIRT.



4600 | UNISEX ECO HEAVYWEIGHT TEE

60% Organic Cotton 40% Recycled Poly RPET.

20 single 190g/5.6oz. New sustainable heavier weight fabric with a premium soft hand. Made of approximately 4 recycled RPET bottles per shirt. Side seamed. Unisex fit. Tear away label.

XS - 3XL





2020 NEW COLOR

4210 | UNISEX ECO PERFORMANCE TEE



30% Recycled Cotton 30% Cotton 40% Recycled Poly RPET.

30 single 145g/4.3oz. Performance attributes with an incredibly soft hand. Fabric is made of 70% recycled material and has wicking performance that can draw moisture away from the skin. Made of approximately 3 recycled RPET bottles per shirt. Set in collar 1x1 baby rib. Hemmed sleeves. Side seamed. Unisex fit. Tear away label.

XS - 3XL



white



heather sapphire



cardinal



heavy metal



black



dark heather gray



midnight navy



heather red



heather black



royal pine



2020 NEW STYLE

4212 | YOUTH ECO PERFORMANCE CREW

30 single 145g/4.3oz. 30% Recycled Cotton 30% Cotton 40% Recycled Poly RPET 1x1 baby rib set-in collar. Hemmed sleeves. Side seamed. Relaxed fit. Pre-shrunk. Tear away label.

XS(4-5)-XL(14-16)



white



heather sapphire



cardinal



heavy metal



black



dark heather gray



midnight navy



heather red



heather black



royal pine





2020 NEW STYLE

4240 | WOMEN'S ECO PERFORMANCE V

30 single 145g/w4.3oz. 30% Recycled Cotton 30% Cotton 40% Recycled Poly RPET 1x1 baby rib set-in collar. Hemmed sleeves. Side seamed. Relaxed fit. Pre-shrunk. Tear away label.

S-3XL



Festival

COLLECTION



Left to right:
5033, 5013, 5080



THIS SUPER SILKY FABRIC IS LIGHTWEIGHT YET DURABLE. TRY YOUR FAVORITE SUBLIMATION DESIGN FOR IMPRESSIVE RESULTS.



Festival

COLLECTION



6200 | UNISEX POLY/ COTTON CREW

65/35 Poly/Cotton Jersey. 40 single 120g/3.5oz. 65% Poly 35% Combed Ring-Spun Cotton. Set-in collar with front cover stitch. Side seamed. Satin label.

XS-3XL



5080 | WOMEN'S FESTIVAL CALI CROP

65/35 Poly/Cotton. 40 single 120g/3.5oz. 65% Poly/35% Combed Ring-Spun Cotton. 1x1 baby rib, relaxed crew neckline. Raw edge sleeve and hem. Cropped body with relaxed fit. Side seamed. Tear away label.

XS-2XL

*5080 colors on page 57



5030 | WOMEN'S FESTIVAL SCOOP

65/35 Poly/Cotton. 40 single 120g/3.5oz. 65% Poly/35% Combed Ring-Spun Cotton. 1x1 baby rib, scoop neckline. Hemmed sleeve. Side seamed. Raw edge, exaggerated droptail hem. Relaxed fit. Tear away label.

XS-2XL

*5030 colors on page 57

6200 Colors:



Festival

COLLECTION



5033 | WOMEN'S FESTIVAL TANK

65/35 Poly/Cotton. 40 single 120g/3.5oz. 65% Poly/35% Combed Ring-Spun Cotton. Scoop neckline. Hemmed neck and armhole. Side seamed. Curved hem. Feminine drape. Tear away label.

XS-2XL



5013 | WOMEN'S FESTIVAL MUSCLE TANK

65/35 Poly/Cotton. 40 single 120g/3.5oz. 65% Poly/35% Combed Ring-Spun Cotton. Relaxed muscle fit tank. Hemmed, oversized armholes. 1x1 baby rib set-in collar. Side seamed. Slight droptail hem. Tear away label.

XS-2XL

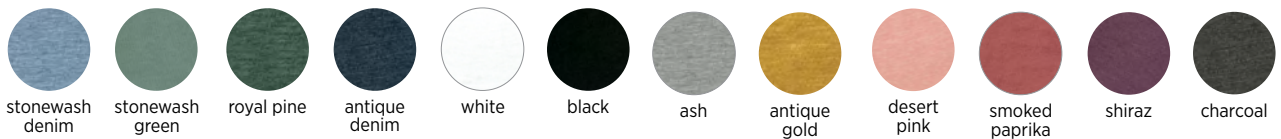


5040 | WOMEN'S FESTIVAL SLEEVELESS V

65/35 Poly/Cotton. 40 single 120g/3.5oz. 65% Poly/35% Combed Ring-Spun Cotton. Self-fabric bound v-neck and armhole. Side seamed. Modestly curved hem. Tear away label.

XS-2XL

5080, 5030, 5033, 5013, 5040 Colors:



IDEAL



Left to right:
1800, 1560, 1534

VALUE AND COMFORT

THIS FINE GAUGE BLENDED FABRIC REPRESENTS A NEW BENCHMARK IN VALUE.
YOU WILL BE AMAZED BY THE ULTRA-SOFT HAND AND PERFORMANCE.



Left to right:
1540, 1533, 1530

THE NEW STANDARD OF "STREET"



2020 NEW STYLE

1800 | UNISEX IDEAL HEAVYWEIGHT CREW

Heavyweight Jersey. 20 single 100% Cotton 190gsm/5.6oz. Heavyweight cotton t-shirt in tubular construction. The Street-inspired tee your customer actually wants to wear. Drop shoulder. 1x1 baby-rib set-in collar. Hemmed sleeves. Relaxed fit. Pre-shrunk. Tear away label.

XS-4XL





2020 NEW COLORS

1533 | WOMEN'S IDEAL RACERBACK TANK

Lightweight Cotton/Poly Jersey. 30 single 135g/4.0oz 60% Combed Ring-Spun Cotton 40% Poly. Lightweight fabric blend. Racerback. Self-fabric binding. Side seamed. Curved hem. Colors are solid unless otherwise noted. Tear away label.

XS-2XL





2020 NEW COLORS

1540 | WOMEN'S IDEAL V

Lightweight Cotton Poly Jersey. 30 single 135g/4.0oz 60% Combed Ring-Spun Cotton 40% Poly. Modest v-neck, set-in collar 1x1 baby rib with front cover stitch. Side seamed. Colors are solid unless otherwise noted. Tear away label.

XS-2XL; select colors in 3XL

3XL Colors: Black, Dark Gray, Heather Gray, Midnight Navy, Red, Royal, White, Antique Gold, Desert Pink





2020 NEW COLORS

1510 | WOMEN'S IDEAL TEE

Lightweight Cotton Poly Jersey. 30 single 135g/4.0oz 60% Combed Ring-Spun Cotton 40% Poly. Lightweight fabric blend. Relaxed crew neckline, set-in collar 1x1 baby rib with front cover stitch. Side seamed. Colors are solid unless otherwise noted. Tear away label.

XS-2XL; select colors in 3XL

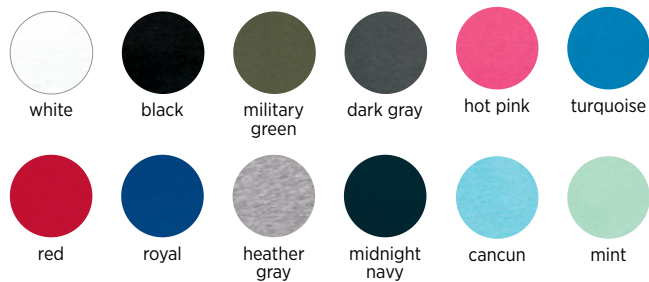
3XL Colors: Black, Dark Gray, Heather Gray, Midnight Navy, Red, Royal, White, Antique Gold, Desert Pink





1560 | WOMEN'S IDEAL DOLMAN

Lightweight Cotton Poly Jersey. 30 single 135g/4.0oz 60% Combed Ring-Spun Cotton 40% Poly. Dolman cut has a flowy fit that is flattering for all. Set-in 1x1 baby rib collar. Side seamed. Curved hem. Colors are solid unless otherwise noted. Tear away label.





1530 | WOMEN'S IDEAL FLOW TEE

Lightweight Cotton Poly Jersey. 30 single 135g/4.0oz. 60% Combed Ring-Spun Cotton 40% Poly. Relaxed crew neckline, set-in collar 1x1 baby rib. Drop tail with curved front and back hem. Generous cut for a loose fit. Side seamed. Colors are solid unless otherwise noted. Tear away label.

XS-2XL



red



purple
rush



midnight
navy



heather
gray



hot pink



white



black

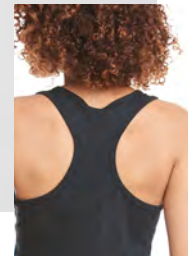


6360 | WOMEN'S ROLL SLEEVE DOLMAN

Lightweight Cotton Poly Jersey. 30 single 135g/4.0oz 60% Combed Ring-Spun Cotton 40% Poly. Dolman cut has a flowy fit that is flattering for all. Set-in 1x1 baby rib collar. Side seamed. Curved hem. Lightweight fabric blend. Set-in Collar 1x1 Baby Rib. Tear Away Label.

XS-2XL





1534 | WOMEN'S IDEAL COLORBLOCK RACERBACK TANK

Lightweight Cotton Poly Jersey. 30 single 135g/4.0oz 60% Combed Ring-Spun Cotton 40% Poly. Racerback. Self-fabric binding matches color of back panel. Side seamed. Curved hem. Colors are solid unless otherwise noted. Tear away label.

XS-2XL

colors listed: front/back and binding



white/black



white/royal



white/hot pink



lilac/heather gray



heather gray/black



turquoise/black



black/red



black/white



black/heather gray



6333 | UNISEX MUSCLE TANK

Lightweight Cotton Poly Jersey. 30 single 135g/4.0oz 60% Combed Ring-Spun Cotton 40% Poly. Set-in Collar 1x1 Baby Rib. Side seamed, hemmed armhole. Tear Away Label.

XS-3XL



6338 | WOMEN'S GATHERED RACERBACK TANK

Lightweight Cotton Poly Jersey. 30 single 135g/4.0oz 60% Combed Ring-Spun Cotton 40% Poly. Set-in Collar 1x1 Baby Rib. Tear Away Label.

XS-2XL





2020 NEW STYLE

7481S | WOMEN'S CROPPED L/S TEE

100% Combed Ring-Spun Cotton, 24 single, 175g/5.1oz. Pre-washed fabric. Super soft ring spun cotton adds to the unique quality of this mid-weight cotton tee. 1x1 baby rib set-in collar and cuffs. Tear away label.

XS-2XL



desert pink



red



military green



midnight navy



dark heather gray



black



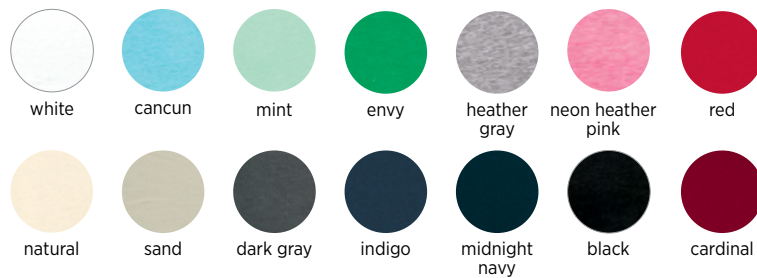
white



6951 | WOMEN'S FRENCH TERRY 3/4 RAGLAN

Lightweight French Terry. 30 single 165g/4.9oz 50% Poly 50% Combed Ring-Spun Cotton (Heather Gray 93% Cotton/7% Poly). Ultra-soft and lightweight. Raw edge at neck. Side seamed. Self-fabric cuffs and waistband. Satin label.

S-2XL





6931 | WOMEN'S FRENCH TERRY L/S SCOOP

Lightweight French Terry. 30 single 165g/4.9oz 50% Poly 50% Combed Ring-Spun Cotton (Heather Gray 93% Cotton/7% Poly). Ultra-soft and lightweight. Scoop neck, drop shoulders, long sleeves. Self-fabric collar, cuffs, and waistband. Side seamed. Satin label.

S-2XL





6933 | WOMEN'S FRENCH TERRY RACERBACK TANK

Lightweight French Terry. 30 single 165g/4.9oz 50% Poly 50% Combed Ring-Spun Cotton. Ultra-soft and lightweight. Side seamed. Hemmed neck, armholes, and bottom. Satin label.

XS-2XL





3533 | WOMEN'S SPANDEX JERSEY TANK

Spandex Jersey. 40 single 145g/4.3oz 57% Combed Ring-Spun Cotton 38% Poly 5% Spandex. Soft spandex jersey has great stretch and recovery. Self-fabric binding. Side seamed. Figure hugging silhouette. Scoop front and back neckline. Tear away label.

XS-2XL





6633 | WOMEN'S SPANDEX JERSEY RACERBACK TANK

Spandex Jersey. 40 single 145g/4.3oz 57% Combed Ring-Spun Cotton 38% Poly 5% Spandex. Soft spandex jersey has great stretch and recovery. Self-fabric binding. Side seamed. Fitted silhouette. Tear away label.

XS-2XL

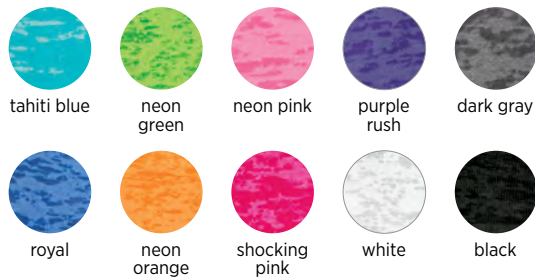




6533 | WOMEN'S BURNOUT RACERBACK TANK

Burnout Jersey. 30 single 125g/3.7oz 65% Poly 35% Combed Ring-Spun Cotton. Fashionable burnout fabric provides unique look and feel. Great stretch and softness. Side seamed. 1x1 burnout baby rib binding. Satin label.

XS-2XL





6521 | WOMEN'S BURNOUT L/S HOODY

Burnout Jersey. 30 single 125g/3.7oz 65% Poly 35% Combed Ring-Spun Cotton. Fashionable burnout fabric provides unique look and feel. V-neck, long sleeve tee with two-ply hood. Side seamed. 1x1 burnout baby rib cuff and band. Satin label.

S-2XL



tahiti blue



white



dark gray



black

ATHLEISURE



FROM STUDIO TO STREET

INDULGE IN THE SOFTNESS OF A RING-SPUN/POLY BLEND.
A SOFT AND SILKY HAND WITH A SNOWY TEXTURED LOOK THAT IS PERFECT FOR
ATHLEISURE AND LIFESTYLE MARKETS.



2022 | UNISEX MOCK TWIST SHORT SLEEVE HOODY

Mock Twist Jersey. 20 single 175g/5.1oz 60% Combed Ring-Spun Cotton 40% Poly. Athleisure look with the softness of a ring-spun/poly blend. Slightly relaxed athletic fit. Curved bottom hem with drop tail and side slit. Side seamed. Tear away label.

XS-3XL



tech pink



tech maroon



heather gray



indigo



forest green



black



2020 NEW COLORS

2050 | MEN'S MOCK TWIST RAGLAN CREW

Mock Twist Jersey. 20 single 175g/5.1oz 60% Combed Ring-Spun Cotton 40% Poly. Athleisure look with softness of a ring-spun/poly blend. Side seamed. Raglan sleeve with contrast flat-lock top stitch. Self-binding collar. Tear away label.

S-3XL



tech pink



tech maroon



heather gray



indigo



forest green



black



tech red



tech royal



2021 | UNISEX MOCK TWIST RAGLAN HOODY

Mock Twist Jersey. 20 single 175g/5.1oz 60% Combed Ring-Spun Cotton 40% Poly. Athleisure look with the softness of a ring-spun/poly blend. Slightly relaxed athletic fit. Curved bottom hem with drop tail and side slit. Side seamed. Tear away label.

XS-3XL



tech pink



tech maroon



heather gray



indigo



forest green



black

INSPIRED DYE



FOR THAT LIVED-IN LOOK AND FEEL

THE GARMENT DYE PROCESS ALLOWS FOR SOFTER SHADES AND FINISHES TO CAPTURE THE LIVED-IN LOOK AND FEEL OF YOUR FAVORITE VINTAGE TEES. THIS PROCESS ALLOWS FOR SLIGHT COLOR VARIATION, GIVING EACH SHIRT UNIQUE CHARACTER.



7433 | UNISEX INSPIRED DYE TANK

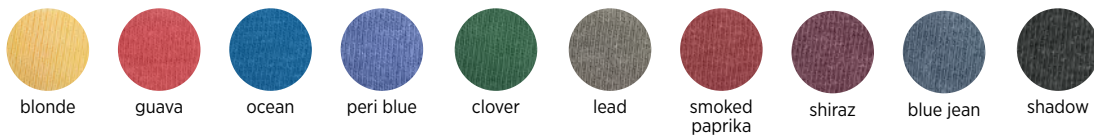
Inspired Dye. 24 single 175g/5.1oz 100% Combed Ring-Spun Cotton. Garment dyed. Side seamed. Self-fabric binding. Tear away label.

XS-3XL

7415 | UNISEX INSPIRED DYE POCKET CREW

Inspired Dye. 24 single 175g/5.1oz 100% Combed Ring-Spun Cotton. Garment Dyed. 1x1 baby rib set-in collar with front cover stitch. Side seamed. Twill tape at back neck. Tear away label.

XS-3XL



blonde

guava

ocean

peri blue

clover

lead

smoked paprika

shiraz

blue jean

shadow



7410 | UNISEX INSPIRED DYE CREW

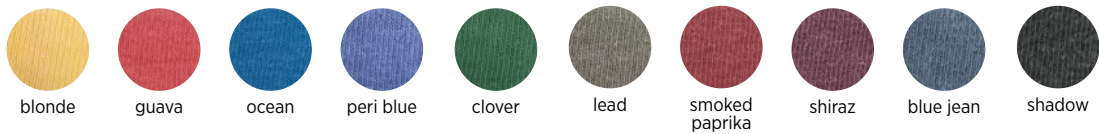
Inspired Dye. 24 single 175g/5.1oz 100% Combed Ring-Spun Cotton. Garment Dyed. 1x1 baby rib set-in collar with front cover stitch. Side seamed. Twill tape at back neck. Tear away label.

XS-3XL

7401 | UNISEX INSPIRED DYE L/S CREW

Inspired Dye. 24 single 175g/5.1oz 100% Combed Ring-Spun Cotton. Garment dyed. 1x1 baby rib set in collar with front cover stitch and cuffs. Side seamed. Twill tape at back neck. Tear away label.

XS-3XL

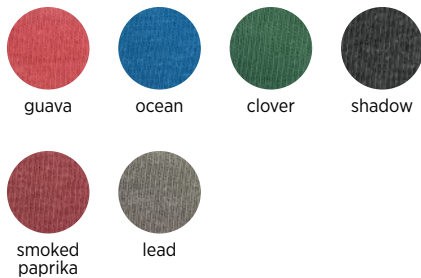




7451 | UNISEX INSPIRED DYE L/S POCKET CREW

Inspired Dye. 24 single 175g/5.1oz 100% Combed Ring-Spun Cotton. Garment Dyed. 1x1 baby rib set-in collar with front cover stitch and cuffs. Side seamed. Twill tape at back neck. Tear away label.

XS-3XL



7410S | UNISEX POWER CREW

Midweight Jersey. 100% Combed Ring-Spun Cotton. 24 single 175g/5.1oz Pre-washed fabric. Super soft ring-spun cotton adds to the unique quality of this mid-weight cotton tee. 1x1 baby rib set-in collar with front cover stitch. Double needle top-stitch around armholes. Side seamed. Dye-to-match twill tape at back neck. Tear away label.

XS-3XL

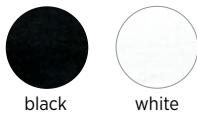




7415S | UNISEX POWER POCKET CREW

Midweight Jersey. 24 single 175g/5.1oz 100% Combed Ring-Spun Cotton. Pre-washed fabric. Super soft ring-spun cotton adds to the unique quality of this mid-weight cotton tee. 1x1 baby rib set-in collar with front cover stitch. Double needle top-stitch around armholes. Side seamed. Dyed-to-match twill tape at back neck. Tear away label.

XS-3XL



black

white



7433S | UNISEX POWER TANK

Midweight Jersey. 24 single 175g/5.1oz 100% Combed Ring-Spun Cotton. Pre-washed fabric. Super soft ring-spun cotton adds to the unique quality of this mid-weight cotton tee. 1x1 baby rib set-in collar with front cover stitch. Double needle top-stitch around armholes. Five point left chest pocket. Side seamed. Dyed-to-match twill tape at back neck. Tear away label.

XS-3XL



black

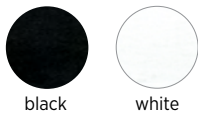
white



7401S | UNISEX POWER L/S CREW

Midweight Jersey. 24 single 175g/5.1oz 100% Combed Ring-Spun Cotton. Pre-washed fabric. Super soft ring-spun cotton adds to the unique quality of this mid-weight cotton tee. 1x1 baby rib set-in collar with front cover stitch. Double needle top-stitch around armholes. Side seamed. Dyed-to-match twill tape at back neck. Tear away label.

XS-3XL



7451S | UNISEX POWER L/S POCKET CREW

Midweight Jersey. 24 single 175g/5.1oz 100% Combed Ring-Spun Cotton. Pre-washed fabric. Super soft ring-spun cotton adds to the unique quality of this mid-weight cotton tee. 1x1 baby rib set-in collar with front cover stitch. Double needle top-stitch around armholes. Five point left chest pocket. Side seamed. Dyed-to-match twill tape at back neck. Tear away label.

XS-3XL



WAFFLE THERMAL

PREMIUM QUALITY MADE TO LAST

INCREDIBLY SOFT AND WARM MICRO WAFFLE THERMAL.

THIS LIGHTWEIGHT MICRO WAFFLE THERMAL HAS A LOW PROFILE, SMOOTH ENOUGH TO PRINT ON, WITH A SOFT AND SUPPLE HAND.



8221 | UNISEX THERMAL HOODY

Waffle Thermal. 36 single 190g/5.6oz 60% Combed Ring-Spun Cotton 40% Poly. Incredibly soft and warm micro-waffle thermal. Smooth print surface. Self-fabric unlined hood. 1x1 baby rib cuff. Side seamed. Flatlock stitched seams and curved hem. Contrast stitch offerings noted. Satin label.

XS-3XL





8201 | UNISEX THERMAL L/S CREW

Waffle Thermal. 36 single 190g/5.6oz 60% Combed Ring-Spun Cotton 40% Poly. Incredibly soft and warm micro-waffle thermal. Smooth print surface. Self-fabric neck. 1x1 baby rib cuff. Side seamed. Flatlock stitched seams and hem. Contrast stitch offerings noted. Satin label.

XS-2XL



FLEECE COLLECTION



Left to right:
9001 & 9700

COMFORT MEETS FASHION

LAYER UP WITH OUR FLEECE COLLECTION

SOFT + PRINTER FRIENDLY



Style 9303



2020 NEW COLORS

9303 | UNISEX 80/20 FLEECE PULLOVER HOODY

80/20 Fleece. 80% Cotton 20% Poly. 30 single 250g/7.4oz. Front pocket, natural drawcord, jersey lined hood, ribbed cuffs and band, locker patch for printable label, 100% cotton face. Tear away label.

XS-3XL





9001 | UNISEX 80/20 FLEECE CREW WITH POCKET

80/20 Fleece. 80% Cotton 20% Poly. 30 single 250g/7.4oz. Front Pocket, locker patch for printable label, 100% cotton face. Tear away label.

XS-3XL





9602 | UNISEX 80/20 FLEECE ZIP HOODY

80/20 Fleece. 80% Cotton 20% Poly. 30 single 250g/7.4oz. Exposed premium antique brass YKK zipper, natural drawcord, jersey lined hood, ribbed cuffs and band, locker patch for printable label, unisex fit, 100% cotton face. Tear away label.

XS-3XL





9103 | 80/20 FLEECE YOUTH ZIP HOODY

80/20 Fleece. 80% Cotton 20% Poly. 30 single 250g/7.4oz. No drawcord, ribbed cuffs and band, kissing zipper with dyed to match neck tape, locker patch for printable label, unisex fit, 100% cotton face. Tear away label.

XS(4/5) - XL(14/16)





9300 | UNISEX PCH PULLOVER HOODY

PCH Fleece. 30 single 250g/7.4oz 60% Cotton 40% Poly. Heathered fleece with unique pockets for a clean finished look. Metal eyelets, drawcord, 1x1 ribbing at cuffs, unisex fit. Tear away label.

XS-3XL



heather cardinal



heather bay blue



heather gray



heather teal



heather military green



heather maroon



heather midnight navy



heather black



9603 | WOMEN'S PCH RAGLAN ZIP HOODY

PCH Fleece. 30 single 250g/7.4oz Heathered Fleece. 60% Cotton 40% Poly. Natural drawcord and exposed premium antique brass YKK zipper, jersey lined hood. Tear away label.

XS-2XL



heather
black



heather
gray



heather
bay blue



heather
cardinal



heather
military
green



9700 | UNISEX PCH BOMBER JACKET

PCH Heathered Fleece. 60% Cotton 40% Poly. 30 single 250g/7.4oz. Solid black ribbing on neck and cuffs, raglan sleeve, locker patch for printable label. Exposed premium antique brass YKK zipper. Tear away label.

XS-3XL



heather
gray



heather
military
green



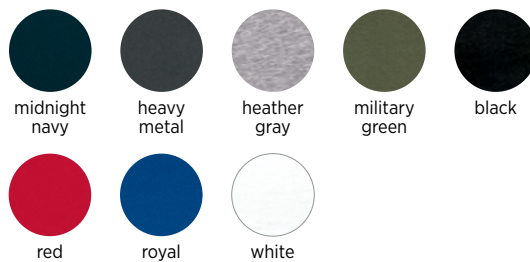
heather
black



9000 | UNISEX FRENCH TERRY L/S CREW

Midweight French Terry. 30 single 180g/5.3oz. 60% Cotton 40% Poly. Raglan sleeve, 1x1 ribbing at collar, waistband and cuffs, classic v-notch neck detail. Tear away label.

XS-3XL





9601 | UNISEX FRENCH TERRY ZIP HOODY

Midweight French Terry. 30 single 180g/5.3oz. 60% Cotton 40% Poly. Contrasting and matching jersey lined hood and flat drawcord, metal eyelets, 1x1 ribbing at cuffs and waistband, unisex fit. Tear away label.

XS-3XL

Colors: listed body/hood liner & drawcord



heather gray/
heather gray



white/
heather gray



royal/
heather gray



midnight navy/
heather gray



heavy metal/
heavy metal



black/
black



black/
gold



black/
red



9301 | UNISEX FRENCH TERRY PULLOVER HOODY

Midweight French Terry. 30 single 180g/5.3oz. 60% Cotton 40% Poly. Contrasting and matching jersey lined hood and flat draw cord, metal eyelets, 1x1 ribbing at cuffs and waistband. Tear away label.

XS-3XL

Colors: listed body/hood liner & drawcord





9600 | UNISEX DENIM FLEECE ZIP HOODY

Denim fleece. 53% Cotton 47% Poly, 7.4oz heather denim-inspired fleece. Exposed premium antique brass YKK zipper, drawcord, 1x1 solid color ribbing at cuffs and waist, unisex fit. Tear away label.

XS-3XL



black



navy



plum



military
green



turquoise



9800 | MEN'S DENIM FLEECE JOGGER

Denim fleece. 53% Cotton 47% Poly, 7.4oz heather denim-inspired fleece. Side pockets, back pocket, solid color ribbed waistband and bottom cuffs, super-soft fleece. Tear away label.

S-2XL



black



navy



9801 | WOMEN'S DENIM FLEECE JOGGER

Denim fleece. 53% Cotton 47% Poly, 7.4oz heather denim-inspired fleece. Side pockets, solid color ribbed waistband and bottom cuffs, super-soft fleece. Tear away label.

XS-2XL



black



navy



Next Level Apparel has developed nineteen custom fabrics to fit your blank apparel needs. Our fabrics represent the prime combination of softness and stretch, ideally engineered for various types of embellishments. We utilize exclusive machinery and premium yarns which yield supreme results.

FINE JERSEY

100% Combed Ring-Spun Cotton and 90/10 Cotton/Polyester in color Heather Gray / 32 single, 145 grams, 4.3oz

This fabric is comfortable and lightweight. Printer's preferred fabric for discharge and DTG printing.

MIDWEIGHT JERSEY

100% Combed Ring-Spun Cotton / 24 single, 175 grams, 5.1oz

This pre-washed midweight fabric won't weigh you down. Soft and comfortable and a great option for a slightly heavier tee.

INSPIRED DYE (GARMENT DYE)

100% Combed Ring-Spun Cotton / 24 single, 175 grams, 5.1oz

The garment dye process allows for softer shades and finishes to capture the lived-in look and feel of your favorite vintage tees. This process allows for slight color variation, giving each shirt unique character.

CVC JERSEY

60% Combed Ring-Spun Cotton 40% Polyester / 32 single, 145 grams, 4.3oz

Our Original CVC is a top of the line fabric that stands up to consistent wear without sacrificing the lived in feel everyone loves.

SUEDED JERSEY

60% Combed Ring-Spun Cotton 40% Polyester / 32 single, 145 grams, 4.3oz

Unbelievably soft hand with an amazing brushed finish.

LIGHTWEIGHT COTTON POLY JERSEY

60% Combed Ring-Spun Cotton 40% Polyester / 30 single, 135 grams, 4.0oz

This fine gauge blended fabric represents a new benchmark in value. You will be amazed by the ultra-soft hand and performance of this exclusive fabric.

MOCK TWIST JERSEY

60% Combed Ring-Spun Cotton 40% Polyester / 20 single, 175 grams, 5.1oz

A soft and silky hand with a snowy, textured look that is perfect for athleisure and lifestyle markets.

ECO HEAVYWEIGHT

60% Organic Cotton 40% Recycled Polyester (RPET) / 20 single, 190 grams, 5.6oz

New sustainable heavier weight fabric with a premium soft hand. Made of approximately 4 recycled RPET bottles per shirt.

ECO PERFORMANCE

30% Recycled Cotton 30% Cotton 40% Recycled Polyester (RPET) / 30 single, 145 grams, 4.3oz

This fabric is made from 70% recycled materials and has wicking performance that can draw moisture away from the skin. Made of approximately 3 recycled RPET bottles per shirt.

WAFFLE THERMAL

60% Combed Ring-Spun Cotton 40% Polyester / 36 single, 190 grams, 5.6oz

This lightweight micro waffle thermal has a low profile, smooth enough to print on, with a soft and supple hand.



SPANDEX JERSEY

57% Combed Ring-Spun Cotton 38% Polyester 5% Spandex / 40 single, 145 grams, 4.3oz
A soft, comfortable fabric with great stretch and memory.

65/35 POLY/COTTON

65% Polyester 35% Combed Ring-Spun Cotton / 40 single, 120 grams, 3.5 oz
This super silky fabric is lightweight yet durable. Test your favorite sublimation design for impressive results.

BURNOUT JERSEY

65% Polyester 35% Combed Ring-Spun Cotton / 30 single, 125 grams, 3.7oz
This fashionable burnout fabric provides a unique look and feel with great stretch, comfort and softness.

LIGHTWEIGHT FRENCH TERRY

50% Combed Ring-Spun Cotton 50% Polyester and 93/7 Cotton/Polyester in color Heather Gray / 30 single, 165 grams, 4.9oz
Extremely soft and comfortable.

TRI-BLEND JERSEY

50% Polyester 25% Combed Ring-Spun Cotton 25% Rayon / 32 single, 145 grams, 4.3oz
This fabric is incredibly soft with great drape, stretch and recovery.

80/20 FLEECE

80% Cotton 20% Polyester / 30 single, 250 grams, 7.4oz, 100% Cotton face
Your favorite cozy fleece sweatshirt with a 100% Cotton face. Ideal for discharge and DTG printing.

PCH FLEECE

60% Cotton 40% Polyester Fleece / 30 single, 250 grams, 7.4oz heathered fleece, 60/40 CVC face
Inspired by our top-selling CVC fabric, this heathered fleece is the perfect compliment to our CVC collection providing durability and printability.

MIDWEIGHT FRENCH TERRY

60% Cotton 40% Polyester Fleece / 30 single, 180 grams, 5.3oz midweight soft French Terry fabric
Our French Terry knit fabric features a soft hand. With a smooth face for decorating and looped back for superior softness against the skin.

DENIM FLEECE

53% Cotton 47% Polyester / 250 grams, 7.4 oz heather denim-inspired fleece
Inspired by your favorite pair of jeans, our heather denim-inspired fleece gives this modern style a cool, vintage vibe. The decorating options are limitless on this printer friendly fabric.

HEAVYWEIGHT JERSEY

100% Cotton and 90/10 Cotton/Polyester in Heather Gray / 20 single, 190 grams, 5.6oz
The street-inspired heavyweight tee your customer actually wants to wear. Ideal for DTG, discharge and screen printing.

SIZING CHART: EXTENDED SIZES

STYLE 3600
XS-4XL



THE PERFECT FIT

NEW EXTENDED SIZES

UNISEX: 3602(XS), 3633(XS),
6233(XS), 6333(XS)

STYLES IN 3XLARGE

MEN: 2050

WOMEN: 1510, 1540, 1560,
3900, 3900A, 3940, 6610, 6760

UNISEX: 2022, 3600A, 3602,
3604, 3605, 3650, 6010, 6010A,
6200, 6333, 6410, 6411, 4600,
4210, 2021, 6051, 8221, 7401,
7410, 7415, 7433, 7451, 7410S,
7401S, 7433S, 7415S, 7451S,
6491, 9000, 9300, 9301, 9600,
9601, 9001, 9303, 9602, 9700

STYLES IN 4XLARGE

UNISEX: 3600, 6210



**SIZE
GUIDE**

Gender	XS	S	M	L	XL	2XL	3XL	4XL
Men's/Unisex (Chest)	33"-35"	35" - 38"	38" - 41"	43" - 44"	45" - 48"	48" - 52"	53.5" - 56"	60"
Women's Fitted (Chest)		29.5"	31.5"	33.5"	36.5"	39.5"		
Women's Fitted (Size)		0 - 2	2 - 4	4 - 6	8 - 10	12		
Women's Relaxed/Classic (Chest)	30"	32"	34"	36"	39"	42"	45.5"	
Women's Relaxed/Classic (Size)	0 - 2	2 - 4	4 - 6	8 - 10	12 - 14	14 - 16	18 -20	
Women's Relaxed 2019 (Chest)	33"	35"	37"	39"	42"	45"	48"	
Women's Relaxed 2019 (Size)	0-2	2-4	4-6	8-10	12-14	14-16	18-20	
Women's Dolman/Flowy (Chest)	35"	37"	38"	40"	44"	47"	50"	
Women's Dolman/Flowy (Size)	2 - 6	4 - 8	6 - 10	8 - 12	12 - 16	18 - 20	20 - 24	
Women's Oversize Fit (Chest)	43"	45"	47"	49"	52"	55"		
Women's Oversize Fit (Size)	2-6	4-8	6-10	8-12	12-16	18-20	20-24	
Boys/Youth (Size)	4/5	6/7	8	10/12	14/16			
Girls' (Size)	3/4	6/6X	7/8	10/12	14/16			
Toddler (Size)	2T	3T	4T					
Men's Joggers (Waist)		29"	31"	33"	35"	37"		
Men's Joggers (Inseam)		30"	30"	30"	30.5"	31"		
Women's Joggers (Waist)	26.5"	28.5"	30.5"	32.5"	34.5"	36.5"		
Women's Joggers (Inseam)	27.75"	28"	28.25"	28.5"	28.75"	29"		

**UNISEX
FIT**

SIZE EQUIVALENT	XS	S	M	L	XL	2XL	3XL	4XL
Men's	XS	S	M	L	XL	2XL	3XL	4XL
Women's	S	M	L	XL	2XL	3XL	N/A	N/A

STYLE SPECS

Measurements in Inches. HPS = High Point Shoulder. Bust = 1" below armhole. Based on flat measurement.

Style #	Style	Specs	XS	S	M	L	XL	2XL	3XL	4XL
1510	Women's Ideal Tee	HPS	25 1/4	25 7/8	26 1/2	27 1/8	27 3/4	28 3/8	29	
		Bust	15 1/8	16 1/8	17 1/8	18 1/8	19 5/8	21 1/8	22 5/8	
1530	Women's Ideal Flow Tee	HPS	26 3/4	27 3/8	28	28 5/8	29 1/4	29 7/8		
		Bust	22 1/4	22 3/4	23 1/4	23 3/4	24 1/4	24 3/4		
1533	Women's Ideal Racerback Tank	HPS	27	27 1/2	28	28 1/2	29	29 1/2		
		Bust	14	15	16	17	18	19		
1534	Women's Ideal Color Block Racerback Tank	HPS	25 3/4	26 3/8	27	28 5/8	28 1/4	28 7/8		
		Bust	15 1/2	16 1/2	17 1/2	18 1/2	19 1/2	20 1/2		
1540	Women's Ideal V	HPS	25 1/4	25 7/8	26 1/2	27 1/8	27 3/4	28 3/8	29	
		Bust	15 1/8	16 1/8	17 1/8	18 1/8	19 5/8	21 1/8	22 5/8	
1560	Women's Ideal Dolman	HPS	25 1/2	26	26 1/2	27	27 1/2	28	28 1/2	
		Bust	17 3/4	18 3/4	19 3/4	20 3/4	22 1/4	23 3/4	25 1/4	
1800	Ideal Heavyweight Crew	HPS	27	28	29	30	31	32	33	34
		Bust	16	18	20 1/2	22 1/2	24 1/2	26 1/2	28 1/2	30 1/2
2021	Mock Twist Raglan Hoody	HPS	27	28	29	30	31	32	33	
		Bust	17 1/2	19	20 1/2	22	24	26	28	
2022	Mock Twist Short Sleeve Hoody	HPS	26	27	28	29	30	31	32	
		Bust	17 1/2	19	20 1/2	22	24	26	28	
2050	Men's Mock Twist Raglan Crew	HPS		28	29	30	31	32	33	
		Bust		19	20 1/2	22	24	26	28	
3200	Cotton V	HPS	27	28	29	30	31	32		
		Bust	17 1/2	19	20 1/2	22	24	26		
3533	Women's Spandex Jersey Tank	HPS	25 3/4	26 3/8	27	27 5/8	28 1/4	28 7/8		
		Bust	13	14	15	16	17 1/2	19		
3600	Cotton Crew	HPS	27	28	29	30	31	32	33	34
		Bust	17 1/2	19	20 1/2	22	24	26	28	30
3600A	USA Cotton Crew	HPS	27	28	29	30	31	32	33	34
		Bust	17 1/2	19	20 1/2	22	24	26	28	30
3601	Men's Cotton L/S Crew	HPS		28	29	30	31	32		
		Bust		18 1/2	20	21 1/2	23 1/2	25 1/2		
3602	Cotton Long Body Crew	HPS	29 3/4	30 3/4	31 3/4	32 3/4	33 3/4	34 3/4	35 3/4	
		Bust	17 1/2	19	20 1/2	22	24	26	28	
3604	Cotton Ringer Tee	HPS	27	28	29	30	31	32	33	

STYLE SPECS

Measurements in Inches. HPS = High Point Shoulder. Bust = 1" below armhole. Based on flat measurement.

Style #	Style	Specs	XS	S	M	L	XL	2XL	3XL	4XL
		Bust	17 1/2	19	20 1/2	22	24	26	28	
3605	Cotton Pocket Tee	HPS	27	28	29	30	31	32	33	
		Bust	17 1/2	19	20 1/2	22	24	26	28	
3633	Cotton Tank	HPS	27 1/2	28 1/2	29 1/2	30 1/2	31 1/2	32 1/2		
		Bust	17	18 1/2	20	21 1/2	23 1/2	25 1/2		
3650	Cotton Raglan Tee	HPS	27	28	29	30	31	32	33	
		Bust	17 1/2	19	20 1/2	22	24	26	28	
3900	Women's Boyfriend Tee	HPS	24 3/4	25 3/8	26	26 5/8	27 1/4	27 7/8	28 1/2	
		Bust	15 1/4	16 1/4	17 1/4	18 1/4	19 3/4	21 1/4	22 3/4	
3900A	USA Women's Boyfriend Tee	HPS	24 3/4	25 3/8	26	26 5/8	27 1/4	27 7/8	28 1/2	
		Bust	15 1/4	16 1/4	17 1/4	18 1/4	19 3/4	21 1/4	22 3/4	
3904	Women's Cotton Ringer Tee	HPS		25 3/8	26	26 5/8	27 1/4	27 7/8		
		Bust		16 1/4	17 1/4	18 1/4	19 3/4	21 1/4		
3940	Women's Relaxed V	HPS	25 1/4	25 7/8	26 1/2	27 1/8	27 3/4	28 3/8	29	
		Bust	17 3/4	18 1/4	18 3/4	19 1/4	19 3/4	20 1/4	20 3/4	
4210	Eco Performance Tee	HPS	27 1/2	28 1/2	29 1/2	30 1/2	31 1/2	32 1/2	33 1/2	34 1/2
		Bust	17 1/2	19	20 1/2	22	24	26	28	30
4240	Women's Eco Performance v	HPS		25 3/8	26	26 5/8	27 1/4	27 7/8	28 1/2	
		Bust		16 1/4	17 1/4	18 1/4	19 3/4	21 1/4	22 3/4	
4600	Eco Heavyweight Tee	HPS	27	28	29	31	32	33	34	
		Bust	17	18 1/2	20	22	24	26	28	
5013	Women's Festival Muscle Tank	HPS	24 1/4	24 7/8	25 1/2	26 1/8	26 3/4	27 3/8		
		Bust	15 1/8	16 1/8	17 1/8	18 1/8	19 5/8	21 1/8		
5030	Women's Festival Scoop	HPS	23 1/4	23 7/8	24 1/2	25 1/8	25 3/4	26 3/8		
		Bust	17 1/2	18 1/2	19 1/2	20 1/2	22	23 1/2		
5033	Women's Festival Tank	HPS	25 1/4	25 3/4	26 1/4	26 3/4	27 1/4	27 3/4		
		Bust	16 5/8	17 5/8	18 5/8	19 5/8	21 1/8	22 5/8		
5040	Women's Festival Sleeveless V	HPS	25	25 1/2	26	26 1/2	27	27 1/2		
		Bust	15 1/2	16 1/2	17 1/2	18 1/2	20	21 1/2		
5080	Women's Festival Cali Crop	HPS	18 3/4	19 3/8	20	20 5/8	21 1/4	21 7/8		
		Bust	17	18	19	20	21 1/2	23		
6010	Tri-Blend Crew	HPS	26 1/2	27 1/2	28 1/2	29 1/2	30 1/2	31 1/2	32 1/2	
		Bust	16 3/4	18 1/4	19 3/4	21 1/4	22 3/4	24 3/4	26 3/4	

STYLE SPECS

Measurements in Inches. HPS = High Point Shoulder. Bust = 1" below armhole. Based on flat measurement.

Style #	Style	Specs	XS	S	M	L	XL	2XL	3XL	4XL
6010A	USA Tri-Blend Crew	HPS	26 1/2	27 1/2	28 1/2	29 1/2	30 1/2	31 1/2	32 1/2	
		Bust	16 3/4	18 1/4	19 3/4	21 1/4	22 3/4	24 3/4	26 3/4	
6021	Tri-Blend L/S Hoody	HPS	27	28	29	30	31	32	33	
		Bust	16 3/4	18 1/4	19 3/4	21 1/4	23 1/4	25 1/4	27 1/4	
6040	Men's Tri-Blend V	HPS		27 1/2	28 1/2	29 1/2	30 1/2	31 1/2		
		Bust		18	19 1/2	21	22 1/2	24 1/2		
6051	Tri-Blend 3/4 Raglan	HPS	27 3/4	28 3/4	29 3/4	30 3/4	31 3/4	32 3/4	33 3/4	
		Bust	17 1/2	19	20 1/2	22	24	26	28	
6071	Tri-Blend L/S Crew	HPS	27	28	29	30	31	32	33	
		Bust	17 1/2	19	20 1/2	22	24	26	28	
6072	Men's Tri-Blend L/S Henley	HPS		28	29	30	31	32		
		Bust		19	20 1/2	22	24	26		
6200	Poly/Cotton Crew	HPS	27	28	29	30	31	32	33	
		Bust	17 1/2	19	20 1/2	22	23 1/2	25	26 1/2	
6210	CVC Crew	HPS	27	28	29	30	31	32	33	34
		Bust	17 1/2	19	20 1/2	22	24	26	28	30
6233	CVC Tank	HPS	27 1/2	28 1/2	29 1/2	30 1/2	31 1/2	32 1/2		
		Bust	17	18 1/2	20	21 1/2	23 1/2	25 1/2		
6240	Men's CVC V	HPS		28	29	30	31	32		
		Bust		19	20 1/2	22	24	26		
6251	CVC 3/4 Sleeve Raglan	HPS	27 1/2	28 1/2	29 1/2	30 1/2	31 1/2	32 1/2	33 1/2	
		Bust	17 1/2	19	20 1/2	22	24	26	28	
6333	Muscle Tank	HPS	28	29	30	31	32	33	34	
		Bust	17 1/2	19	20 1/2	22	24	26	28	
6338	Women's Gathered Raceback Tank	HPS	25 3/4	26 3/8	27	27 5/8	28 1/4	28 7/8		
		Bust	15 1/2	16 1/2	17 1/2	18 1/2	19 1/2	20 1/2		
6360	Women's Roll Sleeve Doman	HPS	25	25 1/2	26	26 1/2	27	27 1/2		
		Bust	17 7/8	18 7/8	19 7/8	20 7/8	22 3/8	23 7/8		
6407	Sueded Snow Short Sleeve Crew	HPS	27	28	29	30	31	32	33	
		Bust	17 1/2	19	20 1/2	22	24	26	28	
6410	Sueded Crew	HPS	27	28	29	30	31	32	33	
		Bust	17 1/2	19	20 1/2	22	24	26	28	
6411	Sueded L/S Crew	HPS	27	28	29	30	31	32	33	

STYLE SPECS

Measurements in Inches. HPS = High Point Shoulder. Bust = 1" below armhole. Based on flat measurement.

Style #	Style	Specs	XS	S	M	L	XL	2XL	3XL	4XL
		Bust	17 1/2	19	20 1/2	22	24	26	28	
6440	Sueded V	HPS	27	28	29	30	31	32		
		Bust	17 1/2	19	20 1/2	22	24	26		
6480	Women's Sueded V	HPS	25 3/4	26 1/4	26 3/4	27 1/4	27 3/4	28 1/4		
		Bust	15	15 3/4	16 3/4	17 3/4	19 1/4	20 3/4		
6491	Sueded Zip Hoody	HPS	26 1/4	27 1/4	28 1/4	29 1/4	30	30 1/2	31	
		Bust	18 5/8	20 1/8	21 5/8	23 1/8	25 1/8	27 1/8	29 1/8	
6521	Women's Burnout Hoody	HPS		27 1/2	28	28 1/2	29	29 1/2		
		Bust		17	18	19	20 1/2	22		
6533	Women's Burnout Racerback Tank	HPS	25 3/4	26 3/8	27	27 5/8	28 1/4	28 7/8		
		Bust	13 1/2	14 1/2	15 1/2	16 1/2	18	19 1/2		
6610	Women's CVC Tee	HPS	25 3/4	26 3/8	27	27 5/8	28 1/4	28 7/8	29 1/2	
		Bust	15 1/4	16 1/4	17 1/4	18 1/4	19 3/4	21 1/4	22 3/4	
6633	Women's Spandex Jersey Racerback Tank	HPS	25 3/4	26 3/8	27	27 5/8	28 1/4	28 7/8		
		Bust	13	14	15	16	17 1/2	19		
6640	Women's CVC Deep V	HPS		26 1/2	27	27 1/2	28	28 1/2		
		Bust		16 1/4	17 1/4	18 1/4	19 3/4	21 1/4		
6710	Women's Tri-Blend Tee	HPS		25 7/8	26 1/2	27 1/8	27 3/4	28 3/8		
		Bust		16 1/8	17 1/8	18 1/8	19 5/8	21 1/8		
6730	Women's Tri-Blend Scoop	HPS		25 1/2	26	26 1/2	27	27 1/2		
		Bust		16 1/2	17 1/2	18 1/2	20	21 1/2		
6731	Women's Tri-Blend L/S Scoop	HPS		26 1/2	27	27 1/2	28	28 1/2		
		Bust		15 3/4	16 3/4	17 3/4	19 1/4	20 3/4		
6733	Women's Tri-Blend Racerback Tank	HPS	26 1/8	26 3/4	27 3/8	28	28 5/8	29 1/4		
		Bust	15 1/4	16 1/4	17 1/4	18 1/4	19 1/4	21 1/4		
6734	Tri-Blend Racerback Tank Dress	HPS	33	33 5/8	34 1/4	34 7/8	35 1/2	36 1/8		
		Bust	15	16	17	18	19 1/2	21		
6740	Women's Tri-Blend Deep V	HPS		26 1/2	27	27 1/2	28	28 1/2		
		Bust		15 1/2	16 1/2	17 1/2	19	20 1/2		
6760	Women's Tri-Blend Dolman	HPS	25 1/2	26	26 1/2	27	27 1/2	28	28 1/2	
		Bust	20 3/4	21 1/8	21 1/2	21 7/8	22 1/4	22 5/8	23	
6931	Women's French Terry L/S Scoop	HPS		24 3/8	25	25 5/8	26 1/4	26 7/8		
		Bust		18 1/2	19 1/2	20 1/2	22	23 1/2		

STYLE SPECS

Measurements in Inches. HPS = High Point Shoulder. Bust = 1" below armhole. Based on flat measurement.

Style #	Style	Specs	XS	S	M	L	XL	2XL	3XL	4XL
6933	Women's French Terry Raceback Tank	HPS	26 3/4	27 3/8	28	28 5/8	29 1/4	29 7/8		
		Bust	15	16	17	18	19 1/2	21		
6951	Women's French Terry 3/4 Raglan	HPS		25 1/2	26	26 1/2	27	27 1/2		
		Bust		19	20	21	22 1/2	24		
7401	Inspired Dye L/S Crew	HPS	27	28	29	30	31	32	33	
		Bust	17	18 1/2	20	22	24	26	28	
7410	Inspired Dye Crew	HPS	27	28	29	30	31	32	33	
		Bust	17 1/2	19	20 1/2	22 1/2	24 1/2	26 1/2	28 1/2	
7415	Inspired Dye Pocket Crew	HPS	27	28	29	30	31	32	33	
		Bust	17	18 1/2	20	22	24	26	28	
7433	Inspired Dye Tank	HPS	27	28	29	30	31	32	33	
		Bust	16 3/4	18 1/4	19 3/4	21 1/4	23 1/4	25 1/4	27 1/4	
7451	Inspired Dye L/S Pocket Crew	HPS	27	28	29	30	31	32	33	
		Bust	17	18 1/2	20	22	24	26	28	
7481S	Women's Cropped L/S Tee	HPS	18 3/4	19 3/8	20	20 5/8	21 1/4	21 7/8		
		Bust	19	20	21	22	23 1/2	25		
8201	Thermal L/S Crew	HPS	27	28	29	30	31	32		
		Bust	16 1/8	17 5/8	19 1/8	20 5/8	22 5/8	24 5/8		
8221	Thermal Hoody	HPS	27 3/4	28 3/4	29 3/4	30 3/4	31 3/4	32 3/4	33 3/4	
		Bust	16 1/2	18	19 1/2	21	23	25	27	
9000	French Terry Raglan Crew	HPS	26	27	28	29	30	31	32	
		Bust	18 1/2	20	21 1/2	23	25	27	29	
9001	80/20 Fleece Crew W/Pocket	HPS	26	27	28	29	29 3/4	30 1/4	30 3/4	
		Bust	18 1/2	20	21 1/2	23	25	27	29	
9300	PCH Pullover Hoody	HPS	27 1/4	28 1/4	29 1/4	30 1/4	31 1/4	32 1/4	33 1/4	
		Bust	19 3/8	20 7/8	22 3/8	23 7/8	25 7/8	27 7/8	29 7/8	
9301	French Terry Pullover Hoody	HPS	26	27	28	29	30	31	32	
		Bust	18 3/4	20 1/4	21 3/4	23 1/4	25 1/4	27 1/4	29 1/4	
9303	80/20 Fleece Pullover Hoody	HPS	26	27	28	29	29 3/4	30 1/4	30 3/4	
		Bust	18 1/2	20	21 1/2	23	25	27	29	
9600	Denim Fleece Zip Hoody	HPS	26	27	28	29	29 3/4	30 1/4	30 3/4	
		Bust	18 1/2	20	21 1/2	23	25	27	29	
9601	French Terry Zip Hoody	HPS	26	27	28	29	30	31	32	
		Bust	18 3/4	20 1/4	21 3/4	23 1/4	25 1/4	27 1/4	29 1/4	

STYLE SPECS

Measurements in Inches. HPS = High Point Shoulder. Bust = 1" below armhole. Based on flat measurement.

Style #	Style	Specs	XS	S	M	L	XL	2XL	3XL	4XL
9602	80/20 Fleece Zip Hoody	HPS	26	27	28	29	29 3/4	30 1/4	30 3/4	
		Bust	17 1/2	19	20 1/2	22ww	24	26	28	
9603	Women's PCH Raglan Zip Hoody	HPS	24 1/4	24 7/8	25 1/2	26 1/8	26 3/4	27 3/8		
		Bust	16 1/8	17 1/8	18 1/8	19 1/8	20 5/8	22 1/8		
9700	PCH Bomber Jacket	HPS	26	27	28	29	29 3/4	30 1/4	30 3/4	
		Bust	17 7/8	19 3/8	20 7/8	22 3/8	24 3/8	26 3/8	28 3/8	
9800	Men's Denim Fleece Jogger	Waist		14 1/2	15 1/2	16 1/2	17 1/2	18 1/2		
		Inseam		30	30	30	30 1/2	31		
9801	Women's Denim Fleece Jogger	Waist	13 1/4	14 1/4	15 1/4	16 1/4	17 1/4	18 1/4		
		Inseam	27 3/4	28	28 1/4	28 1/2	28 3/4	29		

STYLE SPECS - YOUTH

Measurements in Inches

Style #	Boys'/Youth Styles	Specs	XS (4/5)	S (6/7)	M (8)	L (10/12)	XL (14/16)
3310	Youth Cotton Crew	HPS	19	20 1/2	22	23 1/2	25
		Bust	13 3/4	15 1/4	16 3/4	18 1/4	19 3/4
3312	Youth CVC Crew	HPS	19	20 1/2	22	23 1/2	25
		Bust	14	15 1/2	17	18 1/2	20
3352	Youth CVC Raglan	HPS	19	20 1/2	22	23 1/2	25
		Bust	13 1/2	15	16 1/2	18	19 1/2
4212	Youth's Eco Performance Crew	HPS	18 1/2	20	21 1/2	23	24 1/2
		Bust	13 3/4	15 1/4	16 3/4	18 1/4	19 3/4
6310	Youth Tri-Blend Crew	HPS	19	20 1/2	22	23 1/2	25
		Bust	14	15 1/2	17	18 1/2	20
9103	80/20 Fleece Youth Zip Hoody	HPS	19	20 1/2	22	23 1/2	25
		Bust	14 1/8	15 5/8	17 1/8	18 5/8	20 1/8

Style #	Girls' Styles	Specs	XS (3/4)	S (6/6x)	M (7/8)	L (10/12)	XL (14/16)
3710	Girl's Princess Tee	HPS	19	20	21	23	25
		Bust	11 1/2	12 1/2	13 1/2	15	16 1/2
3712	Girl's Princess CVC Tee	HPS	19	20	21	23	25
		Bust	11 1/2	12 1/2	13 1/2	15	16 1/2

Style #	Toddler's Style	Specs	2T	3T	4T		
3110	Toddler's Cotton Tee	HPS	16 1/4	17	17 3/4		
		Bust	12	13	14		



FINE JERSEY

32 single, 145 grams 4.3oz
100% Combed Ring-Spun Cotton
Plastisol: Soft hand, flash about 180 degrees if needed, cure ink 320 degrees.
Water base ink: Flash about 180 degrees if needed, cure at 320 degrees for 90 seconds.

MIDWEIGHT JERSEY

24 single, 175 grams 5.1oz
100% Combed Ring-Spun Cotton
Plastisol: Soft hand, flash about 180 degrees if needed, cure ink 320 degrees.
Water base ink: Flash about 180 degrees if needed, cure at 320 degrees for 90 seconds.

INSPIRED DYE

24 single, 175 grams 5.1oz
100% Combed Ring-Spun Cotton
Plastisol: Soft hand, flash about 180 degrees if needed, cure ink 320 degrees.
*Due to the unique pigment dying process we suggest the following:
Use methods and inks specific to avoiding dye migration.
When applying white ink, use a gray plastisol blocker under base, flash then poly white.*

CVC JERSEY

32 single, 145 grams, 4.3oz
60% Combed Ring-Spun Cotton 40% Polyester
Plastisol: Soft hand, flash about 180 degrees if needed, cure ink 320 degrees.
Water base ink: Flash about 180 degrees if needed, cure at 320 degrees for 90 seconds.

MOCK TWIST JERSEY

20 single, 175 grams, 5.1oz
60% Combed Ring-Spun Cotton 40% Polyester
Plastisol: Soft hand, flash about 180 degrees if needed, cure ink 320 degrees.
Water base ink: Flash about 180 degrees if needed, cure at 320 degrees for 90 seconds.

SUEDED JERSEY

32 Single, 145 grams, 4.3oz
60% Combed Ring-Spun Cotton 40% Polyester
Plastisol: Soft hand, flash about 180 degrees if needed, cure ink 320 degrees.
Water base ink: Flash about 180 degrees if needed, cure at 320 degrees for 90 seconds.

SPANDEX JERSEY

40 Single, 145 grams, 4.3oz
57% Combed Ring-Spun Cotton 38% Polyester 5% Spandex
Plastisol: Soft hand, flash about 180 degrees if needed, cure ink 320 degrees.
Stretch additive recommended.
Water base ink: Flash about 180 degrees if needed, cure at 320 degrees for 90 seconds.

LIGHTWEIGHT FRENCH TERRY

30 single, 165 grams, 4.9oz
50% Combed Ring-Spun Cotton 50% Polyester
Plastisol: Soft hand, flash about 180 degrees if needed, cure ink 320 degrees.
Water base ink: Flash about 180 degrees if needed, cure at 320 degrees for 90 seconds.

TRI-BLEND JERSEY

32 single, 145 grams, 4.3oz
50% Polyester 25% Combed Ring-Spun Cotton 25% Rayon
Plastisol: Soft hand, low flash temperature cure ink 320 degrees.
Water base ink: Low flash temperature, cure at 320 degrees for 90 seconds.

65/35 POLY COTTON

40 single, 120 grams, 3.5oz
65% Polyester 35% Combed Ring-Spun Cotton
Plastisol: Soft hand, low flash temperature cure ink 320 degrees.
Water base ink: Low flash temperature, cure at 320 degrees for 90 seconds.

BURNOUT JERSEY

32 single, 125 grams, 3.7oz
65% Polyester 35% Combed Ring-Spun Cotton
High mesh count recommended.
Plastisol: Soft hand, low flash temperature cure ink 320 degrees.
Water base ink: Low flash temperature, cure at 320 degrees for 90 seconds.

WAFFLE THERMAL

36 single, 190 grams, 5.6oz
60% Combed Ring-Spun Cotton 40% Polyester
Plastisol: Soft hand, flash about 180 degrees if needed, cure ink 320 degrees.
Stretch additive recommended.
Water base ink: Flash about 180 degrees if needed, cure at 320 degrees for 90 seconds.

LIGHTWEIGHT COTTON POLY JERSEY

30 single, 135 grams, 4.0oz
60% Combed Ring-Spun Cotton 40% Polyester
Plastisol: Soft hand, flash about 180 degrees if needed, cure ink 320 degrees.
Water base ink: Flash about 180 degrees if needed, cure at 320 degrees for 90 seconds.

ECO PERFORMANCE

30 singles, 145 grams, 4.3oz
30% Recycled Cotton 30% Cotton 40% Recycled Polyester (RPET)
Plastisol: Soft hand, flash about 180 degrees if needed, cure ink 320 degrees.
Water base ink: Flash about 180 degrees if needed, cure at 320 degrees for 90 seconds.

ECO HEAVYWEIGHT

20 single, 190 grams, 5.6oz
60% Organic Cotton 40% Recycled Polyester (RPET)
Plastisol: Soft hand, flash about 180 degrees if needed, cure ink 320 degrees.
Water base ink: Flash about 180 degrees if needed, cure at 320 degrees for 90 seconds.

MIDWEIGHT FRENCH TERRY

30 single, 180 grams, 5.3oz
60% Combed Ring-Spun Cotton 40% Polyester Fleece
Plastisol: Soft hand, flash about 180 degrees if needed, cure ink 320 degrees.
Water base ink: Flash about 180 degrees if needed, cure at 320 degrees for 90 seconds.

PCH FLEECE

30 single, 250 grams, 7.4oz
60% Combed Ring-Spun Cotton 40% Polyester Fleece
Plastisol: Soft hand, flash about 180 degrees if needed, cure ink 320 degrees.
Water base ink: Flash about 180 degrees if needed, cure at 320 degrees for 90 seconds.

DENIM FLEECE

250 grams, 7.4oz
53% Combed Ring-Spun Cotton 47% Polyester Fleece
Plastisol: Soft hand, flash about 180 degrees if needed, cure ink 320 degrees.
Water base ink: Flash about 180 degrees if needed, cure at 320 degrees for 90 seconds.

80/20 FLEECE

30 single, 250 grams, 7.4oz, 100% Cotton face
80% Cotton 20% Polyester Fleece
Plastisol: Soft hand, flash about 180 degrees if needed, cure ink 320 degrees.
Water base ink: Flash about 180 degrees if needed, cure at 320 degrees for 90 seconds.

Next Level Apparel is providing the above information as a reference guide only. Actual temperatures, drying times, inks, or other elements of the printing process might vary based on equipment, location or any other number of factors. A test sample run is highly recommended, especially if you have a large order or if your printer does not specialize in printing on blended fabrics. Next Level Apparel assumes no liability for providing the above information. For more information please contact csr@nextlevelapparel.com.

PRINT GUIDE

DISCHARGE RATING

Discharge Print Rating Scale:

- A** - Ideal for discharge printing
- B**- Acceptable for discharge printing
- C**- Not recommended for discharge printing

For best results, use the 100% cotton recommended styles 3600 and 3900.

COLOR	PANTONE CODE	DISCHARGE RATING
 ANTIQUE GOLD	7550 U	A
 BANANA CREAM	1205 C	A
 BLACK		A
 CARDINAL	202 C	B
 CANCUN	636 C	A
 CLASSIC ORANGE	172 C	A
 COOL BLUE	7693 C	C
 CREAM	9162 C	A
 DARK CHOCOLATE	412 C	B
 DESERT PINK	2444 C	A
 FOREST GREEN	560 C	A
 GOLD	130 C	B
 HEATHER GRAY		C
 HEAVY METAL	447 C	A
 HOT PINK	211 C	B
 INDIGO	7545 C	B
 KELLY GREEN	347 C	C
 LIGHT BLUE	545 C	A

COLOR	PANTONE CODE	DISCHARGE RATING
 LIGHT GRAY	Cool Gray 6 C	A
 LIGHT OLIVE	5763 U	A
 LIGHT PINK	494 C	B
 MAROON	7643 C	B
 MIDNIGHT NAVY	539 C	B
 MILITARY GREEN	5743 C	A
 MINT	566 U	B
 NATURAL	7499 U	A
 PURPLE BERRY	526 U	A
 PURPLE RUSH	268 C	C
 RED	186 C	C
 ROYAL	661 C	C
 SAND	7527 C	A
 TAHITI BLUE	319 C	A
 TURQUOISE	7461 C	A
 VIBRANT YELLOW	107 C	C
 WARM GRAY	403 C	A
 WHITE		N/A

Next Level Apparel is providing the above information as a reference guide only. Actual temperatures, drying times, inks, or other elements of the printing process might vary based on equipment, location or any other number of factors. A test sample run is highly recommended, especially if you have a large order or if your printer does not specialize in printing on blended fabrics. Next Level Apparel assumes no liability for providing the above information. For more information please contact csr@nextlevelapparel.com.

INDEX

Introduction	2	6410: Unisex Sueded Crew	44	7401: Unisex Inspired Dye L/S Crew	82
Table of Contents	3-4	6407: Unisex Sueded Snow Crew NEW	45	7451: Unisex Inspired Dye L/S Pocket Crew	82
New Styles	5	6440: Unisex Sueded V	46	7410S: Unisex Power Crew	83
Style Index	6-7	6480: Women's Sueded V	46	7415S: Unisex Power Pocket Crew	84
Brand Overview	8	6491: Unisex Sueded Zip Hoody	47	7433S: Unisex Power Tank	84
Social Responsibility	9	6411: Unisex Sueded L/S Crew	47	7401S: Unisex Power L/s Crew	85
3600: Unisex Cotton Crew	11	3600A: Unisex USA Cotton Crew	49	7451S: Unisex Power L/S Pocket Crew	85
3900: Women's Boyfriend Tee	12	3900A: USA Women's Boyfriend Tee	49	8221: Unisex Thermal Hoody	86
3601: Men's Cotton L/S Crew	13	6010A: Unisex USA Tri-Blend Crew	49	8201: Unisex Thermal L/S Crew	87
3605: Unisex Cotton Pocket Crew	14	4600: Unisex Eco Heavyweight Tee	50	9303: Unisex 80/20 Fleece Pullover Hoody	90
3602: Unisex Cotton Long Body Crew	15	4210: Unisex Eco Performance Tee	51	9001: Unisex 80/20 Fleece Crew with Pocket	91
3633: Unisex Cotton Tank	15	4212: Youth Eco Performance Crew NEW	52	9602: Unisex 80/20 Fleece Zip Hoody	92
3200: Unisex Cotton V	16	4240: Women's Eco Performance V NEW	53	9103: 80/20 Fleece Youth Zip Hoody	93
3940: Women's Relaxed V	17	6200: Unisex Poly/Cotton Crew	56	9300: Unisex PCH Pullover Hoody	94
3650: Unisex Cotton Raglan Tee	18-19	5080: Women's Festival Cali Crop	56	9603: Women's PCH Raglan Zip Hoody	95
3604: Unisex Cotton Ringer Tee	20-21	5030: Women's Festival Scoop	56	9700: Unisex PCH Bomber Jacket	96
3904: Women's Cotton Ringer Tee	20-21	5033: Women's Festival Tank	57	9301: Unisex French Terry Pullover Hoody	99
3710: Girl's Princess Tee	22	5013: Women's Festival Muscle Tank	57	9601: Unisex French Terry Zip Hoody	98
3310: Youth Cotton Crew	23	5040: Women's Festival Sleeveless V	57	9000: Unisex French Terry L/S Crew	97
3110: Toddler Cotton Tee	23	1800: Unisex Ideal Heavyweight Crew NEW	60-61	9600: Unisex Denim Fleece Zip Hoody	100
6251: Unisex CVC 3/4 Sleeve Raglan NEW	24-25	1533: Women's Ideal Racerback Tank	62	9801: Women's Denim Fleece Jogger	101
6210: Unisex CVC Crew	26	1540: Women's Ideal V	63	9800: Men's Denim Jogger	101
6610: Women's CVC Tee	27	1510: Women's Ideal Tee	64	Fabrics	102-103
6240: Men's CVC V	28	1560: Women's Ideal Dolman	65	Extended Sizes	104
6640: Women's CVC Deep V	29	1530: Women's Ideal Flow Tee	66	Size Guide	105
6233: Unisex CVC Tank	30	6360: Women's Roll Sleeve Dolman	67	Specs	106-111
3352: Youth CVC 3/4 Raglan	30	1534: Ideal Colorblock Racerback Tank	68	Print Guide	112-113
3312: Youth CVC Crew	31	6333: Ideal Muscle Tank	69	Index	114
3712: Girl's Princess CVC Tee	31	6338: Gathered Racerback Tank	69	Color Card	115-118
6010: Unisex Tri-Blend Crew	32	7481S: Women's Cropped L/S Tee NEW	70		
6710: Women's Tri-Blend Tee	33	6951: Women's French Terry 3/4 Raglan	71		
6310: Youth Tri-Blend Crew	33	6931: Women's French Terry L/S Scoop	72		
6040: Men's Tri-Blend V	34	6933: French Terry Racerback Tank	73		
6740: Women's Tri-Blend Deep V	35	3533: Women's Spandex Jersey Tank	74		
6733: Women's Tri-Blend Racerback Tank	36	6633: Spandex Jersey Racerback Tank	75		
6734: Tri-Blend Racerback Tank Dress	37	6533: Burnout Racerback Tank	76		
6730: Women's Tri-Blend L/S Scoop	38	6521: Women's Burnout L/S Hoody	77		
6071: Unisex Tri-Blend L/S Crew	39	2022: Unisex Mock Twist S/S Hoody	79		
6760: Women's Tri-Blend Dolman	40	2050: Men's Mock Twist Raglan Crew	79		
6731: Women's Tri-Blend Scoop	41	2021: Unisex Mock Twist Raglan Hoody	79		
6021: Unisex Tri-Blend L/S Hoody	42	7433: Unisex Inspired Dye Tank	81		
6072: Men's Tri-Blend L/S Henley	42	7415: Unisex Inspired Dye Pocket Crew	81		
6051: Unisex Tri-Blend 3/4 Raglan	43	7410: Unisex Inspired Dye Crew	82		



FIT. FABRIC. FASHION.



NEXT LEVEL
APPAREL™



NEXT LEVEL
A P P A R E L™



WHAT'S **NOW**. WHAT'S **NEXT**.

NEXTLEVELAPPAREL.COM